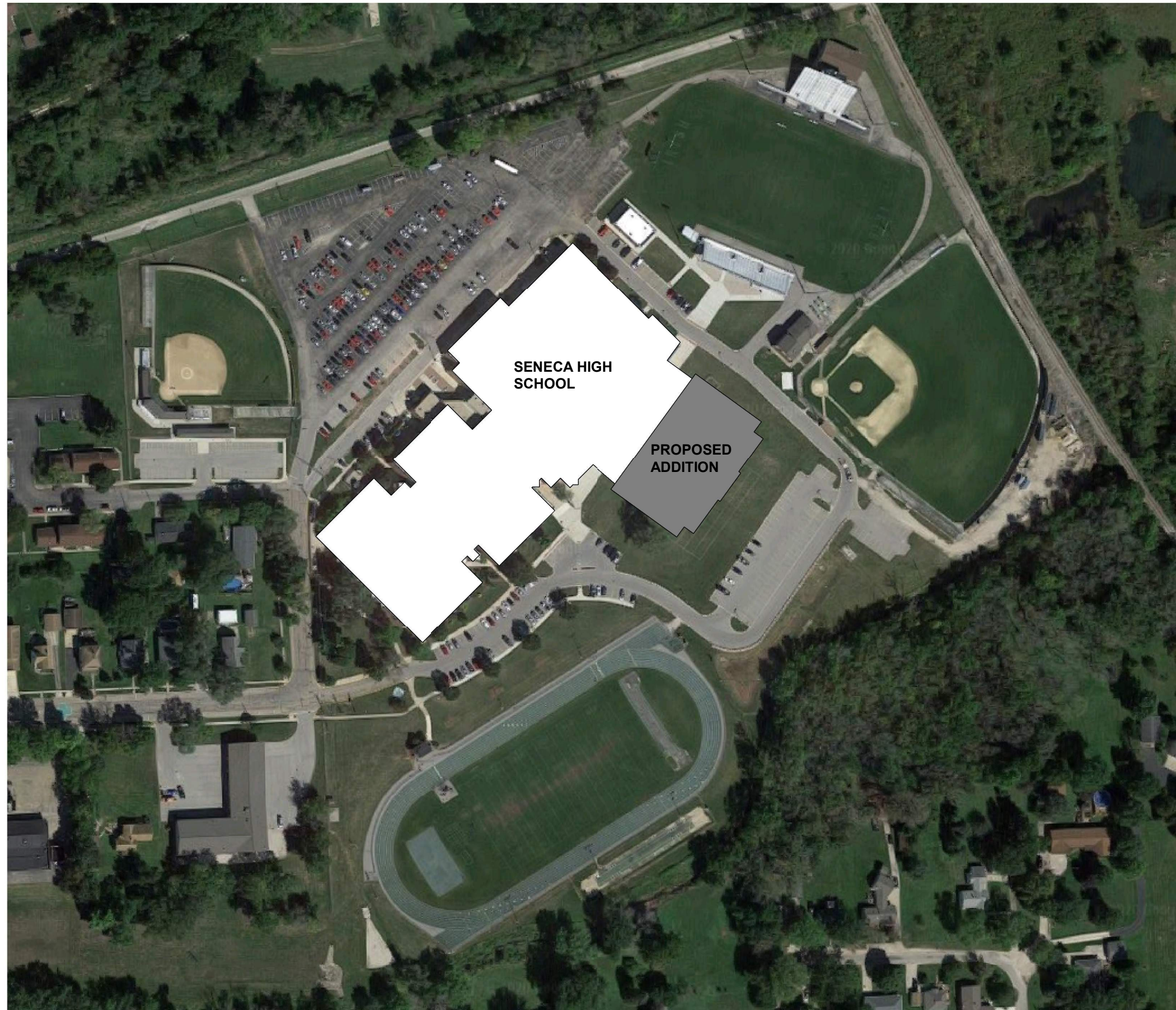




**SCHOOL BOARD UPDATE**  
**Schematic Design**

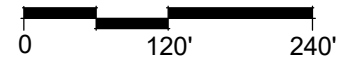


SENECA HIGH SCHOOL

PROPOSED ADDITION

1 SITE PLAN

1" = 160'-0"

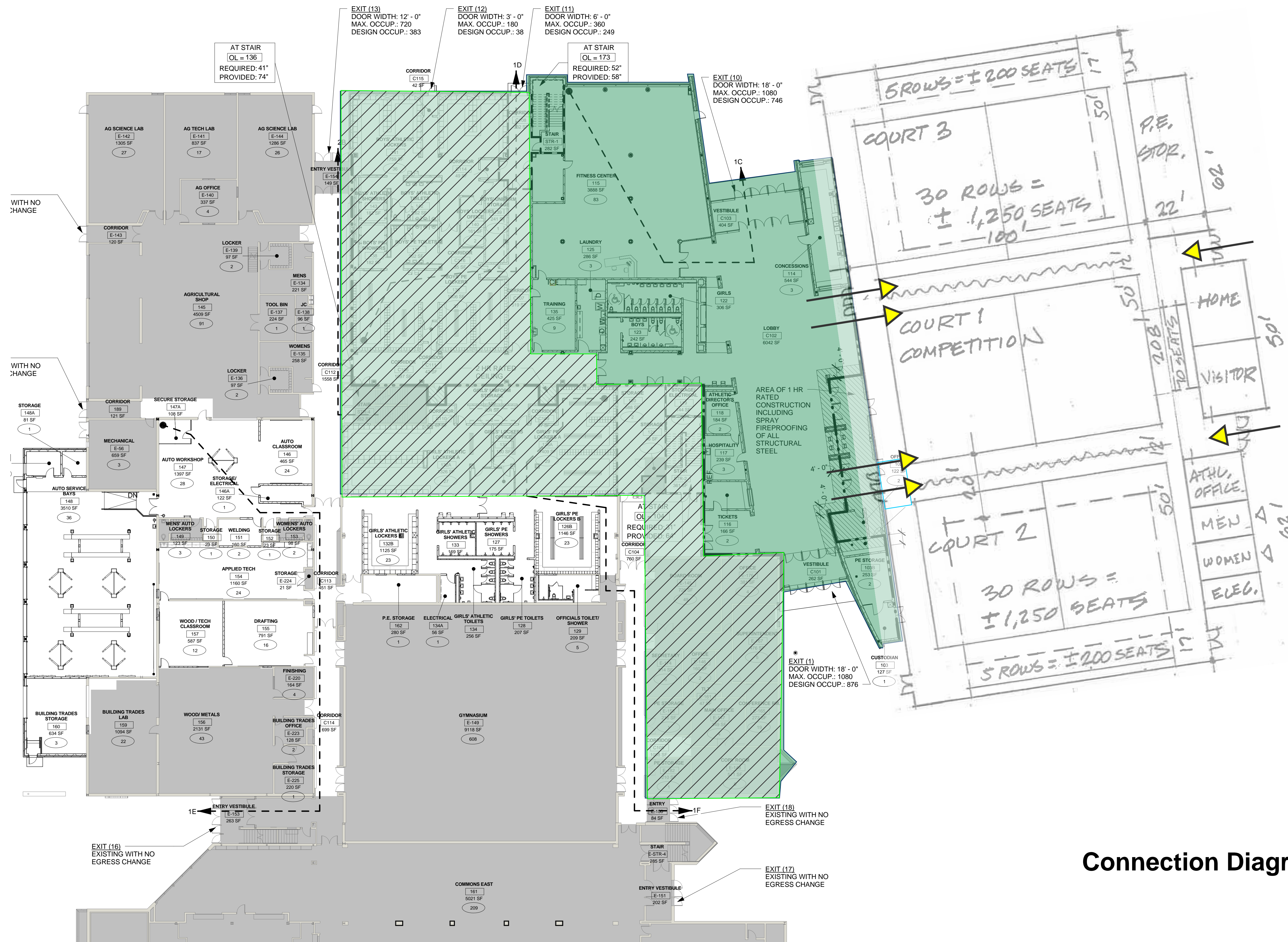




	PROGRAMMING				SCHEMATIC DESIGN				DESIGN DEVELOPMENT			
	Qty	Size	Total SF	<i>Comments</i>	Qty	Size	Total SF	<i>Comments</i>	Qty	Size	Total SF	<i>Comments</i>
<b>Gymnasium Addition</b>												
Open Gymnasium (3 Courts)	1	20000	20,000 SF	<i>*Space &amp; runoff included</i>	1	21,865 SF	21,865 SF	<i>*circ included</i>			0 SF	
25 Row Bleachers (+/- 1200 seats ea.)	2	240	480 SF	<i>*closed position</i>	2	177	354 SF	<i>*reduced 900 ea</i>			0 SF	
Pep Band/Aux Bleacher (+/- 90 seats)	1	145	145 SF	<i>*closed position</i>	1	140	140 SF				0 SF	
Athletic / PE Storage	1	800	800 SF		1	2487	2,487 SF	<i>*now two separate spaces</i>			0 SF	
Team Rooms (Home and Visitor)	2	480	960 SF		2	480	960 SF				0 SF	
Coach's Office	1	230	230 SF		1	220	220 SF				0 SF	
Toilet (Exterior Access)	2	360	720 SF		2	310	620 SF				0 SF	
Storage/ Electrical Room	1	280	280 SF		1	0	0 SF				0 SF	
<b>Building Addition Net Area Total</b>			<b>23,615 SF</b>				<b>26,646 SF</b>				<b>0 SF</b>	
<b>Existing Area To Be Renovated</b>												
Officials Rooms	2	430	860 SF		2	430	860 SF				0 SF	
<b>Renovation Net Area Total</b>			<b>860 SF</b>				<b>860 SF</b>				<b>0 SF</b>	
<b>TOTAL AREAS</b>												
Gymnasium Addition			23,615 SF				26,646 SF				0 SF	
<b>Total Net Square Footage (Addition)</b>			<b>23,615 SF</b>				<b>26,646 SF</b>				<b>0 SF</b>	
Net/Gross Factor			x 1.25				x 1.00			x 1.30		
<b>Total Gross Square Footage (Addition)</b>			<b>29,519 SF</b>				<b>26,646 SF</b>				<b>0 SF</b>	
<b>Total Gross Square Footage of (Renovation)</b>			<b>860 SF</b>				<b>860 SF</b>				<b>0 SF</b>	

---

**Preliminary SD Estimated Cost** \_\_\_\_\_ **Construction Cost - \$8,400,000**  
**Total Project Cost (including soft costs) - \$10,800,000**



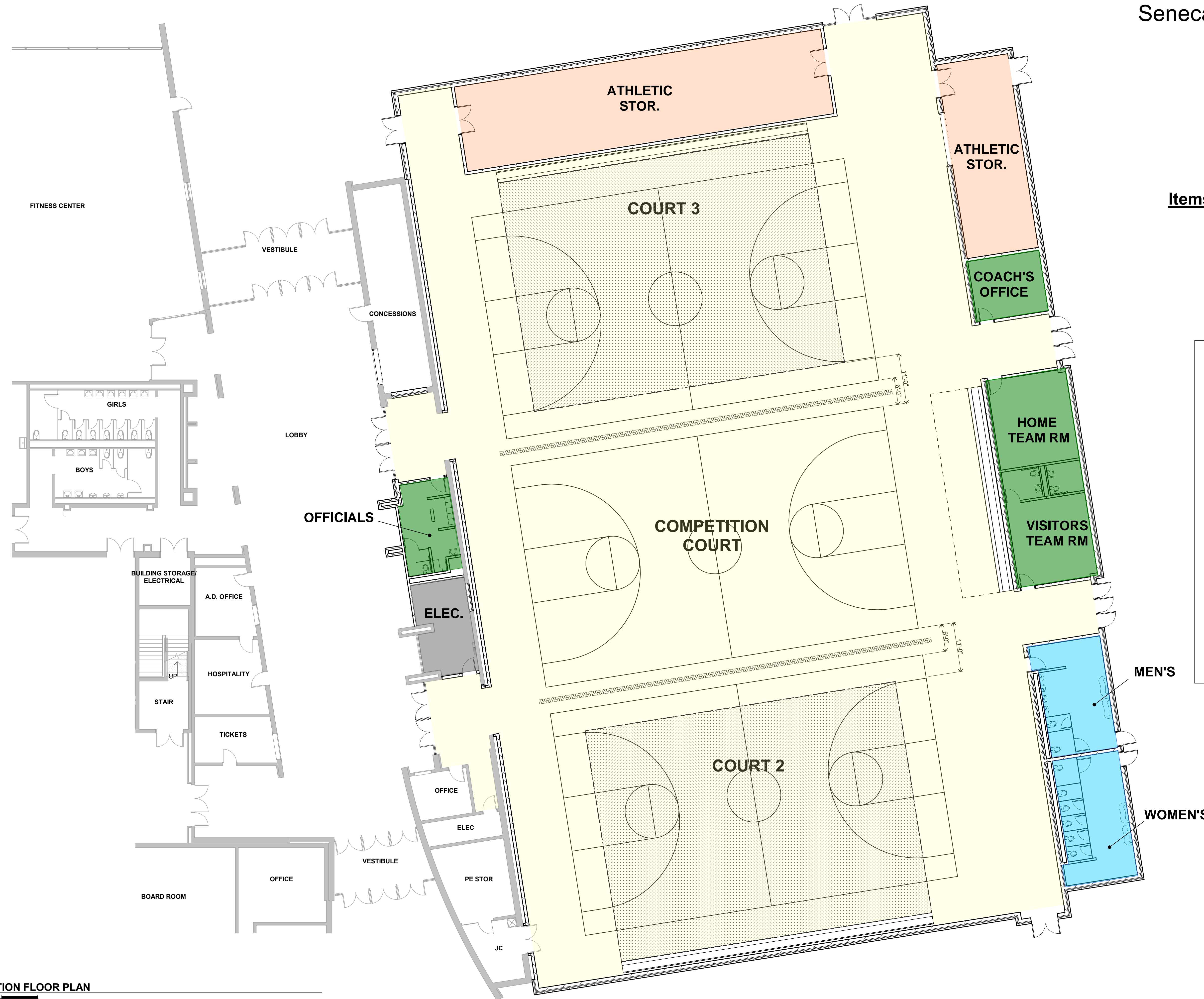
### Connection Diagram



# Seneca Township High School

Seneca Gymnasium Addition

December 15, 2021

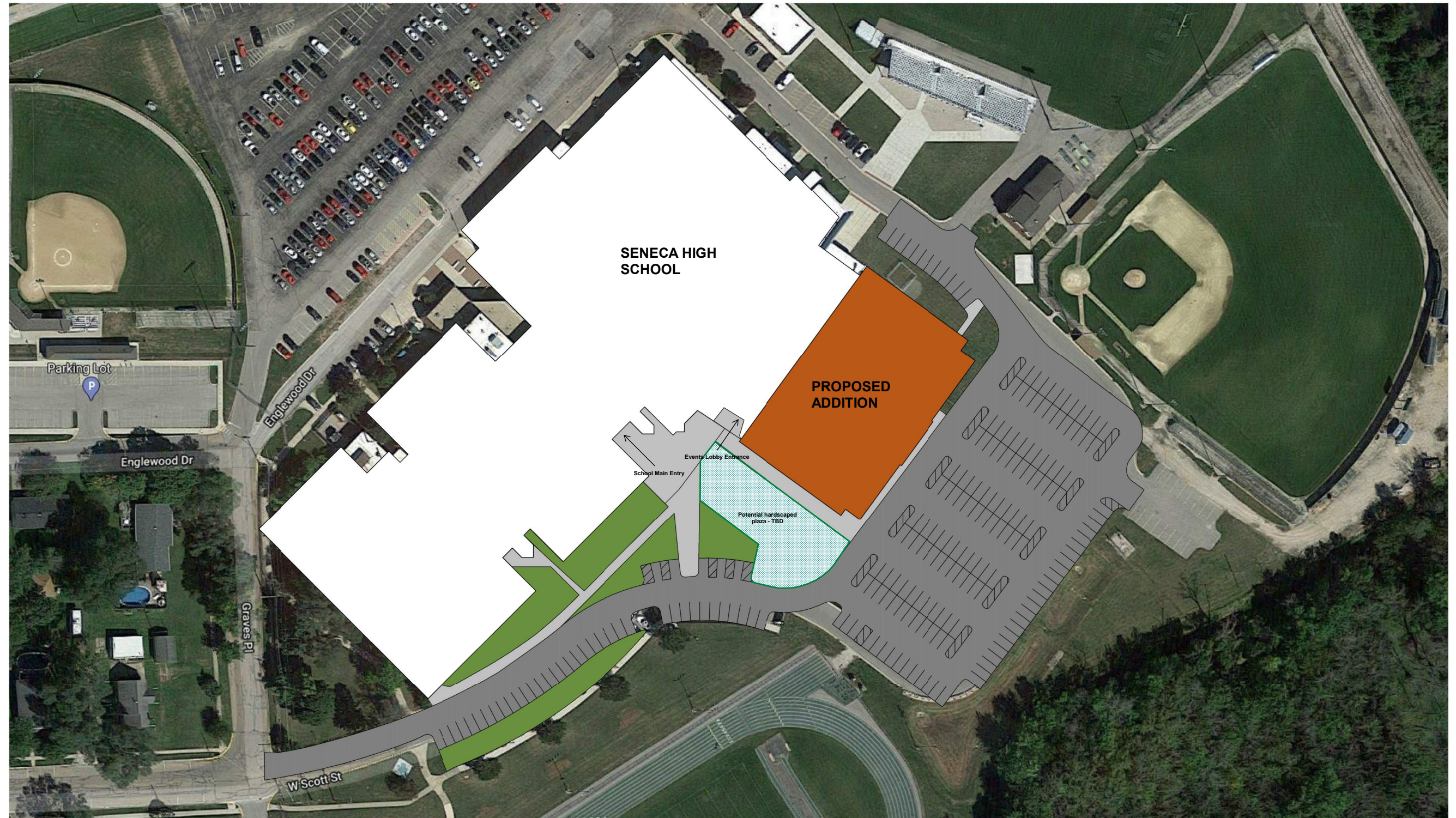


### Items To Be Accomodated:

- Wrestling Mat Storage
- Dividing Curtains
- Batting Cages

FUNCTION LEGEND	
ACTIVITY & CIRCULATION	<span style="display: inline-block; width: 20px; height: 10px; background-color: #ffffcc; border: 1px solid black;"></span>
SUPPORT SPACES	<span style="display: inline-block; width: 20px; height: 10px; background-color: #90ee90; border: 1px solid black;"></span>
TOILETS	<span style="display: inline-block; width: 20px; height: 10px; background-color: #add8e6; border: 1px solid black;"></span>
MECH/ELEC,	<span style="display: inline-block; width: 20px; height: 10px; background-color: #808080; border: 1px solid black;"></span>
STORAGE	<span style="display: inline-block; width: 20px; height: 10px; background-color: #ffcc99; border: 1px solid black;"></span>

**1 GYMNASIUM ADDITION FLOOR PLAN**  
 3/32" = 1'-0"  
 0 8' 16'



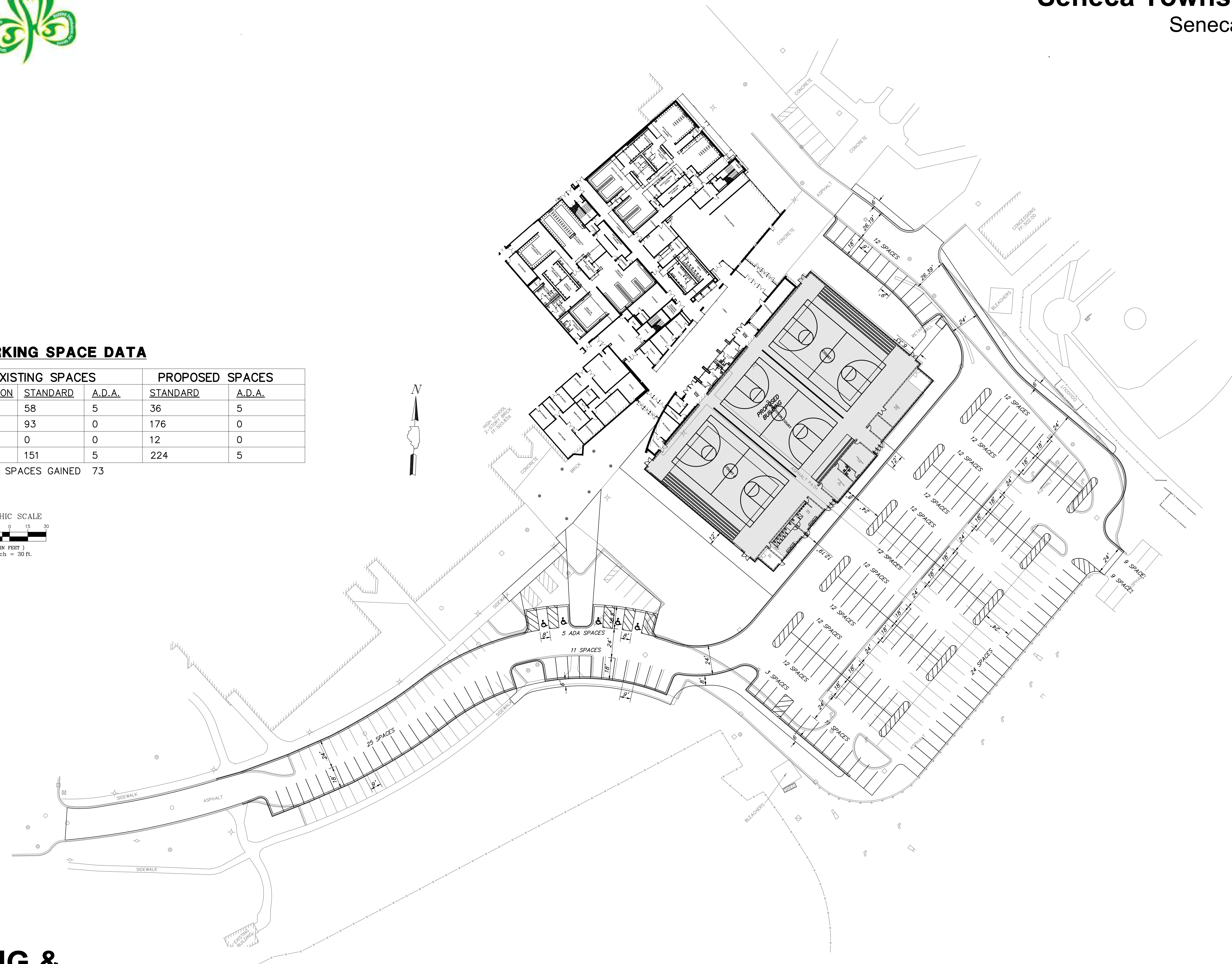
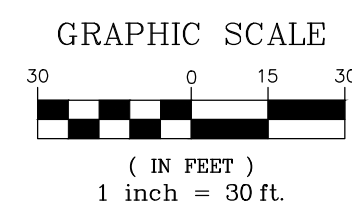
**1 SITE PLAN**  
 1" = 100'-0"  
 0 75' 150'



**PARKING SPACE DATA**

EXISTING SPACES			PROPOSED SPACES	
LOCATION	STANDARD	A.D.A.	STANDARD	A.D.A.
WEST	58	5	36	5
SOUTH	93	0	176	0
EAST	0	0	12	0
TOTAL	151	5	224	5

TOTAL SPACES GAINED 73



**PARKING & CIRCULATION STUDY**



## Possible Materials:

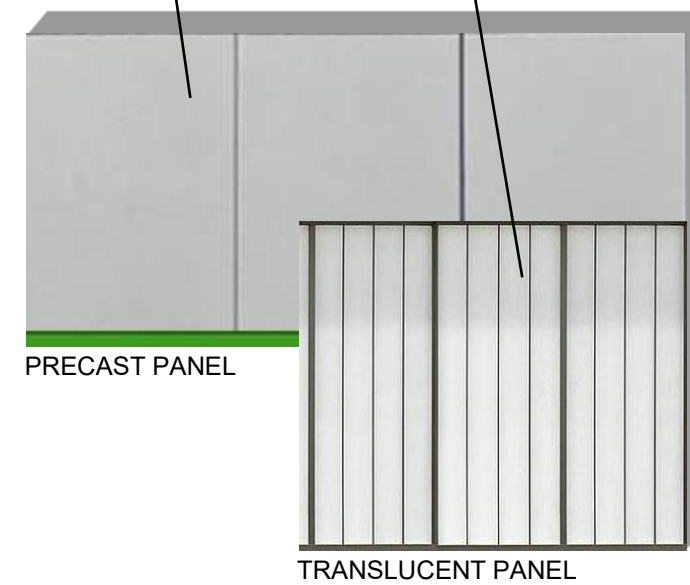
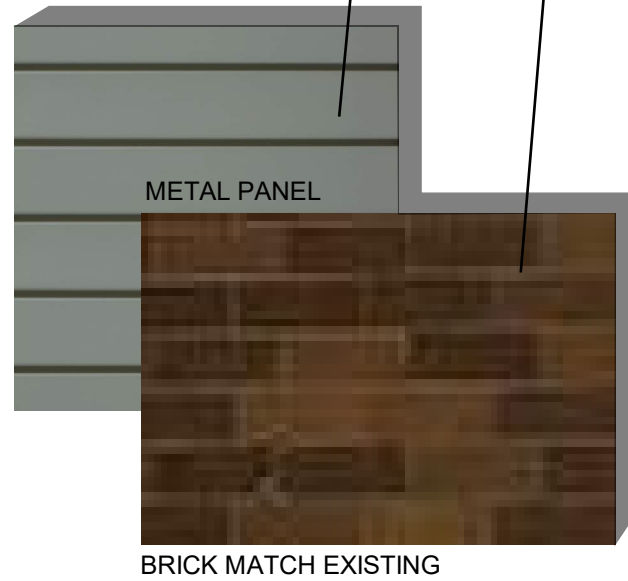
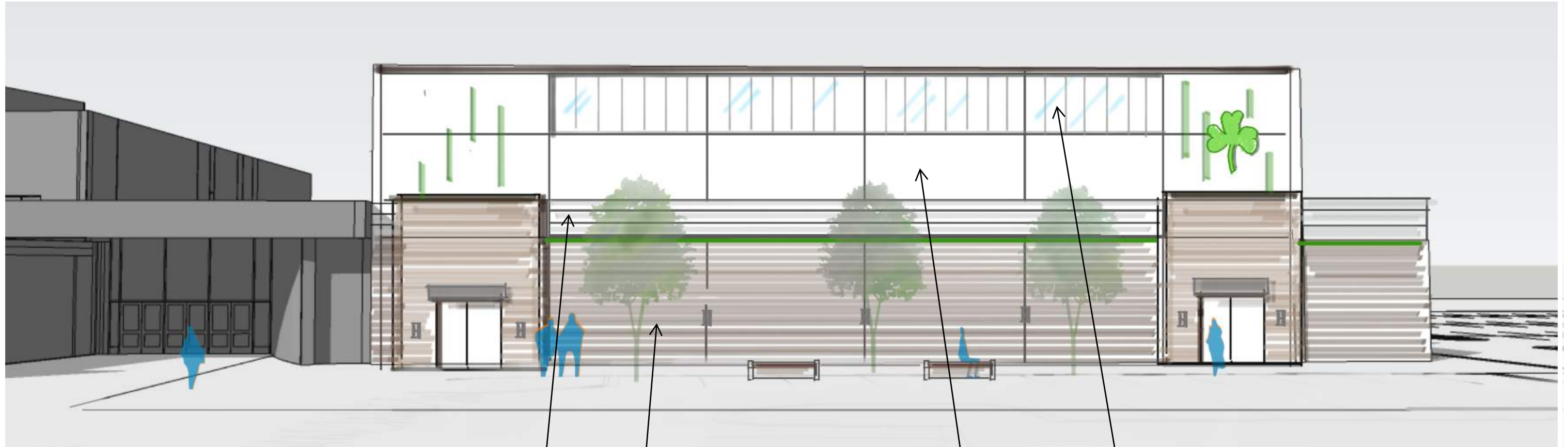
- Precast
- Precast w/ Brick Inlay
- Full Masonry wall
- Metal Panel
- Glass/ Curtain Wall
- Translucent Wall Panel



12/8/2021 4:07:40 PM







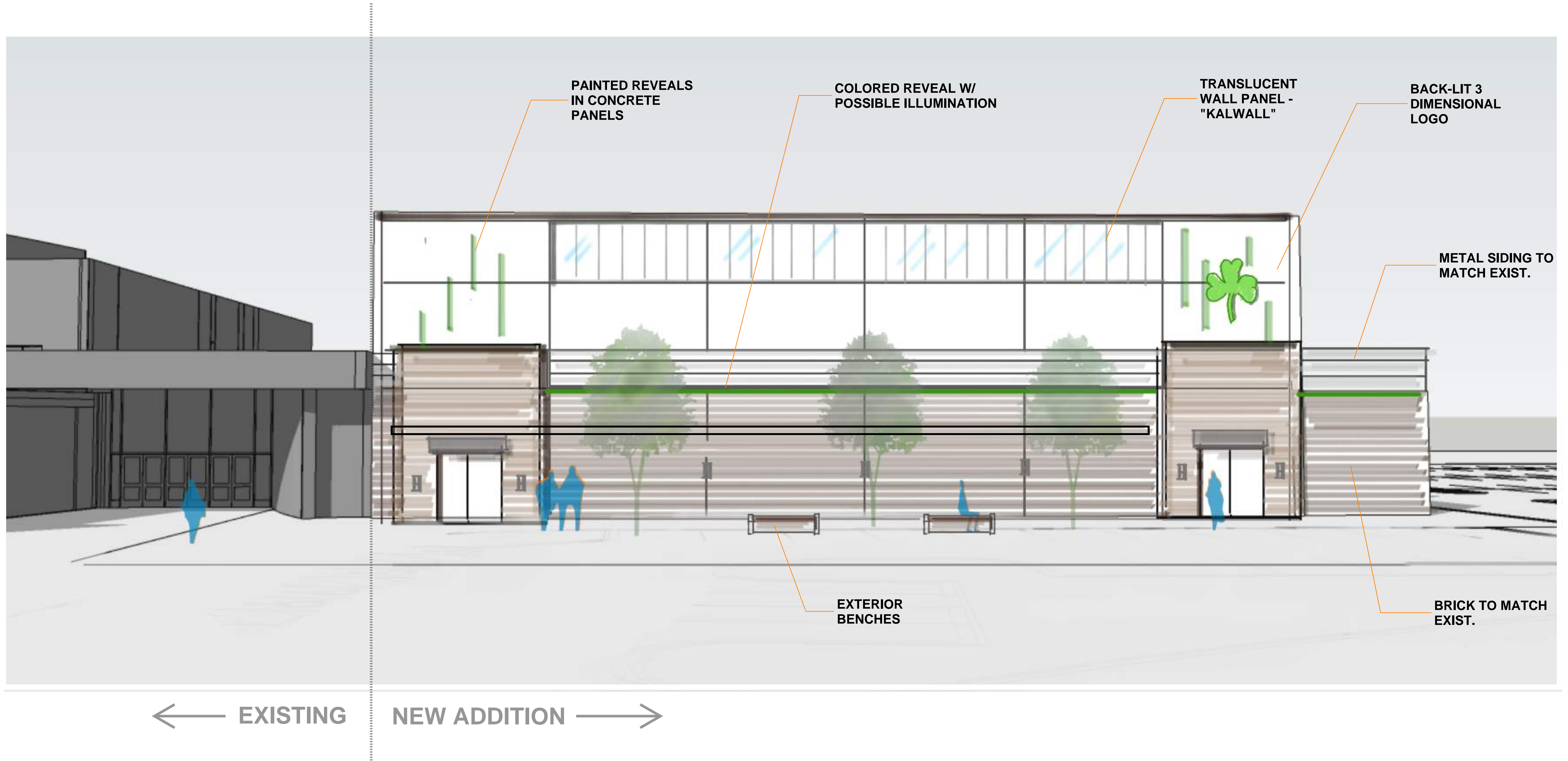
**MATERIAL PALETTE**



# Seneca Township High School

Seneca Gymnasium Addition

December 15, 2021



## ELEVATION STUDY



## SOUTH ELEVATION RENDERING