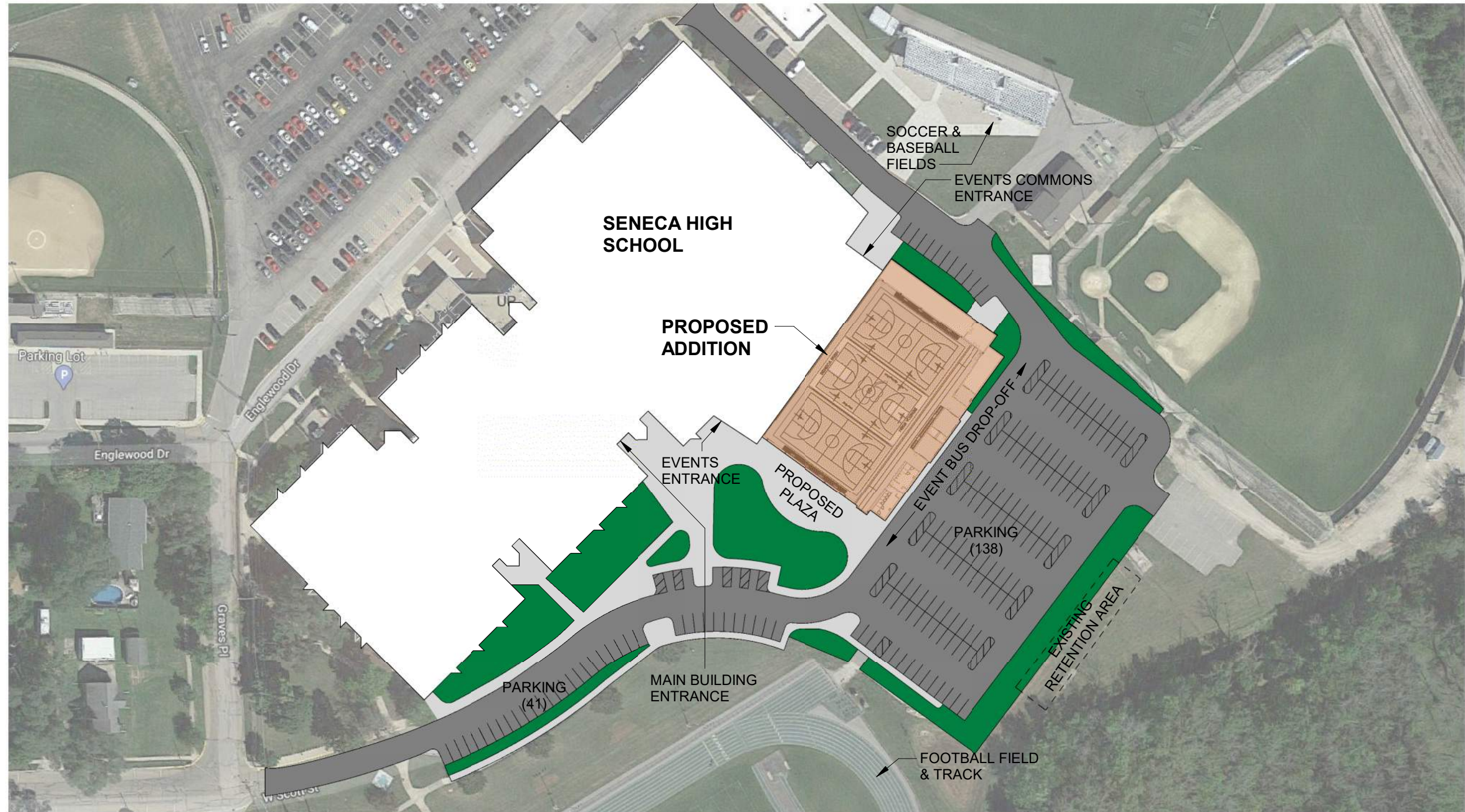




SENECA HIGH SCHOOL GYMNASIUM ADDITION

COMMUNITY FORUM

AUGUST 16, 2022



1 SITE PLAN
1" = 100'-0"
0 75' 150'



BLEACHER COUNT:

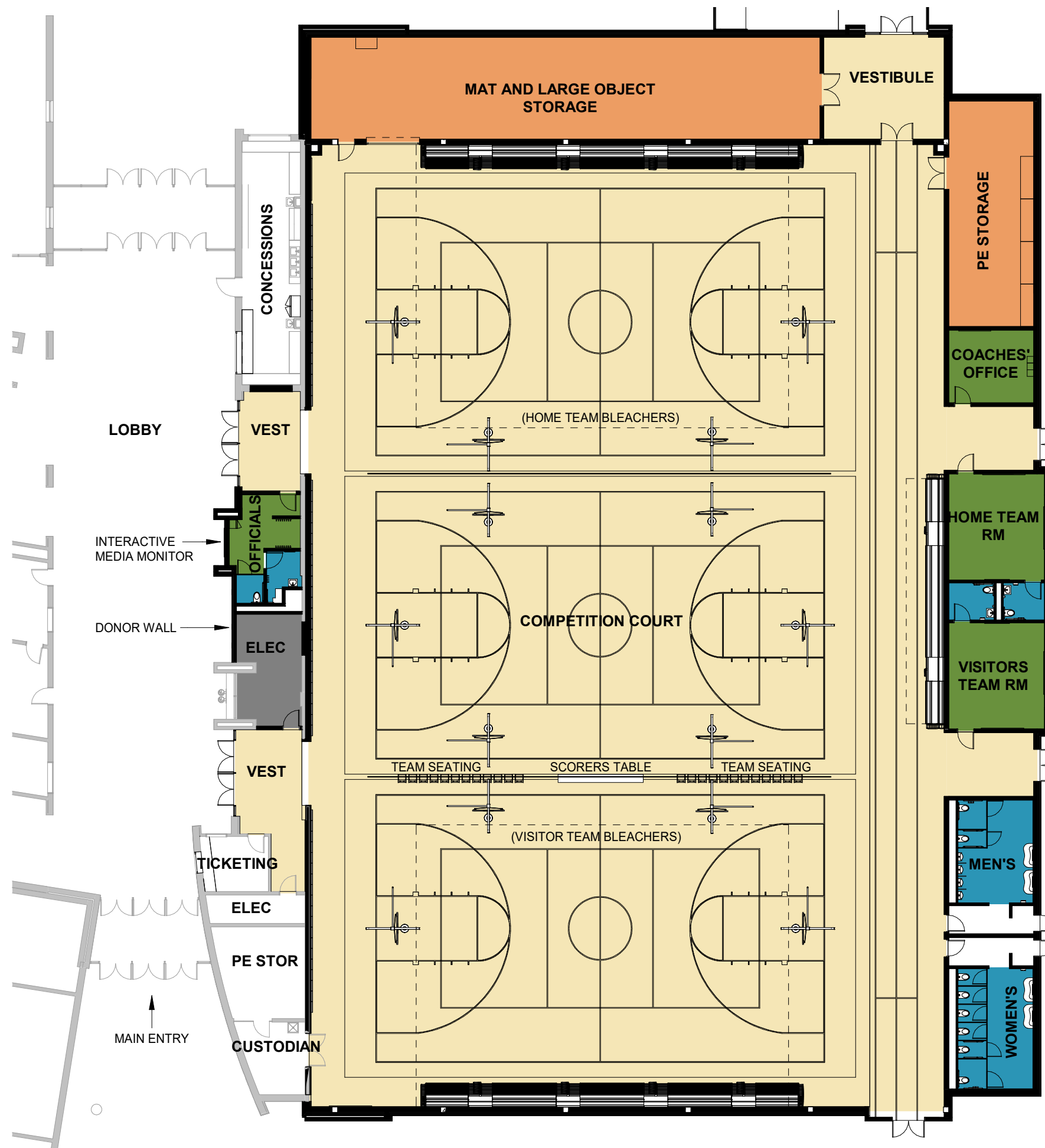
MAIN BLEACHERS: 936 SEATS (EACH)

BAND BLEACHERS: 98 SEATS

TOTAL SEATING: 1,970 SEATS

FUNCTION LEGEND

- ACTIVITY & CIRCULATION
- SUPPORT SPACES
- TOILETS
- MECH/ELEC
- STORAGE



1 GYMNASIUM ADDITION PLAN
 3/64" = 1'-0"
 0 16' 32'



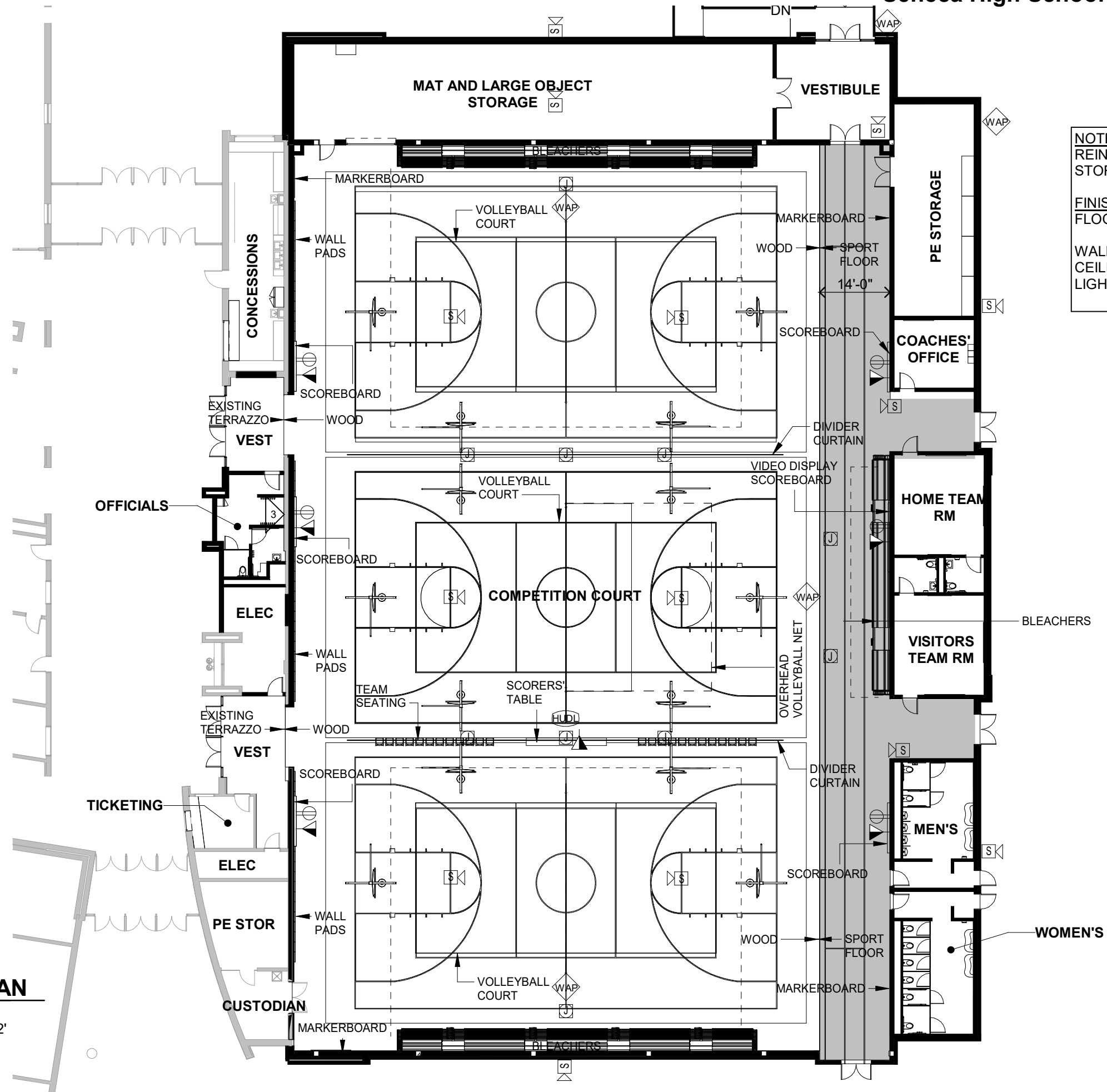
NOTES:
REINSTALL MAT LIFTS IN LARGE STORAGE ROOM

FINISHES:
FLOORING- WOOD (COURT), RUBBER ATHLETIC FLOOR (TRACK)

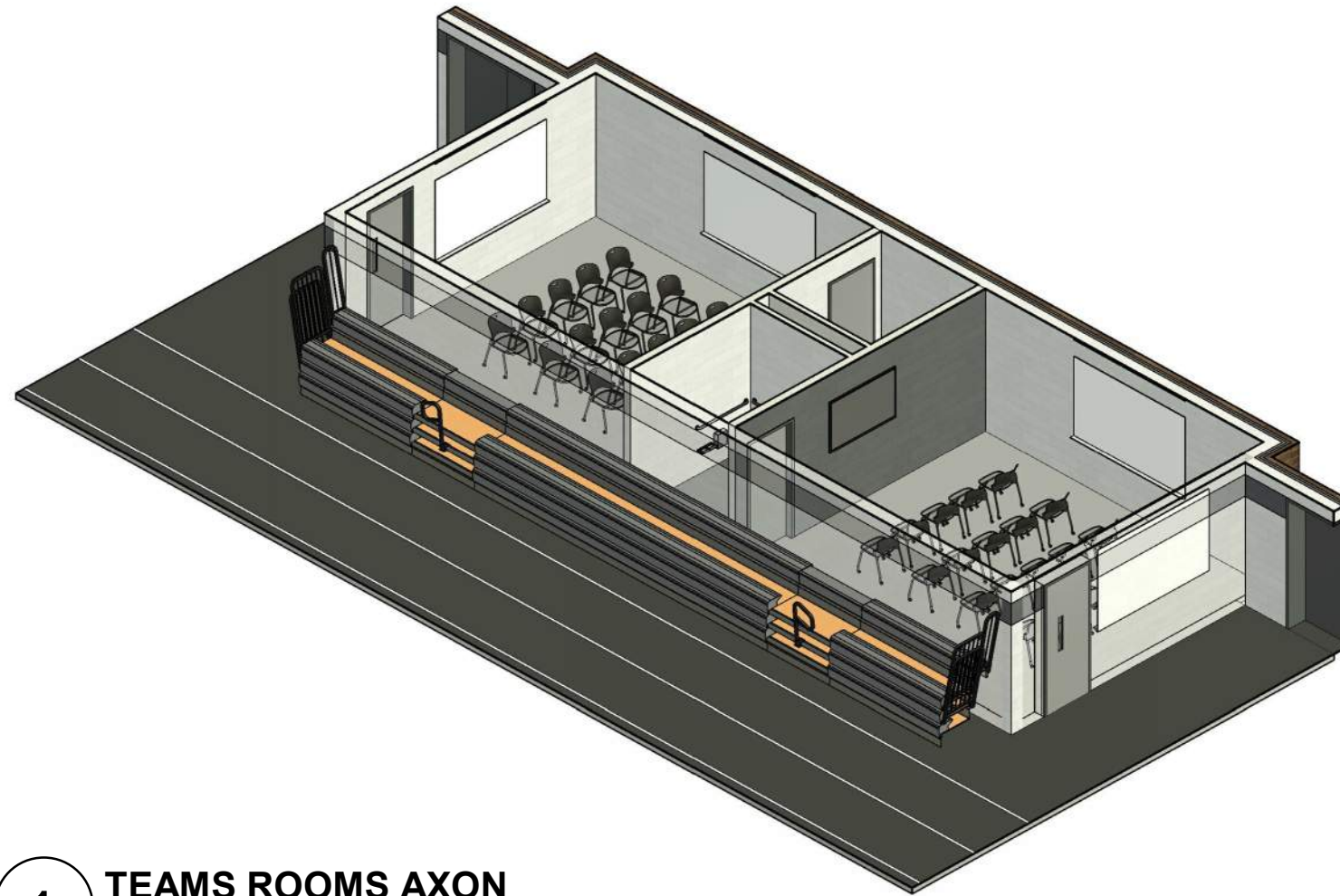
WALLS- CMU AND PAINT
CEILING- EXPOSED
LIGHTING- LED

ELECTRICAL SYMBOL KEY

- PHONE
- DUPLEX RECEPTACLE
- DOUBLE DUPLEX RECEPTACLE
- SURFACE MOUNT DEVICES
- SINGLE LIGHT SWITCH
- WALL OR CEILING PROJECTOR
- TV OUTLET (HIGH AND/OR LOW)
- DATA OUTLET
- FLOOR BOX (POWER AND DATA)
- CAMERA
- HUDL CAMERA
- WIRELESS ACCESS POINT
- NETWORK BOX
- VAPE SENSOR

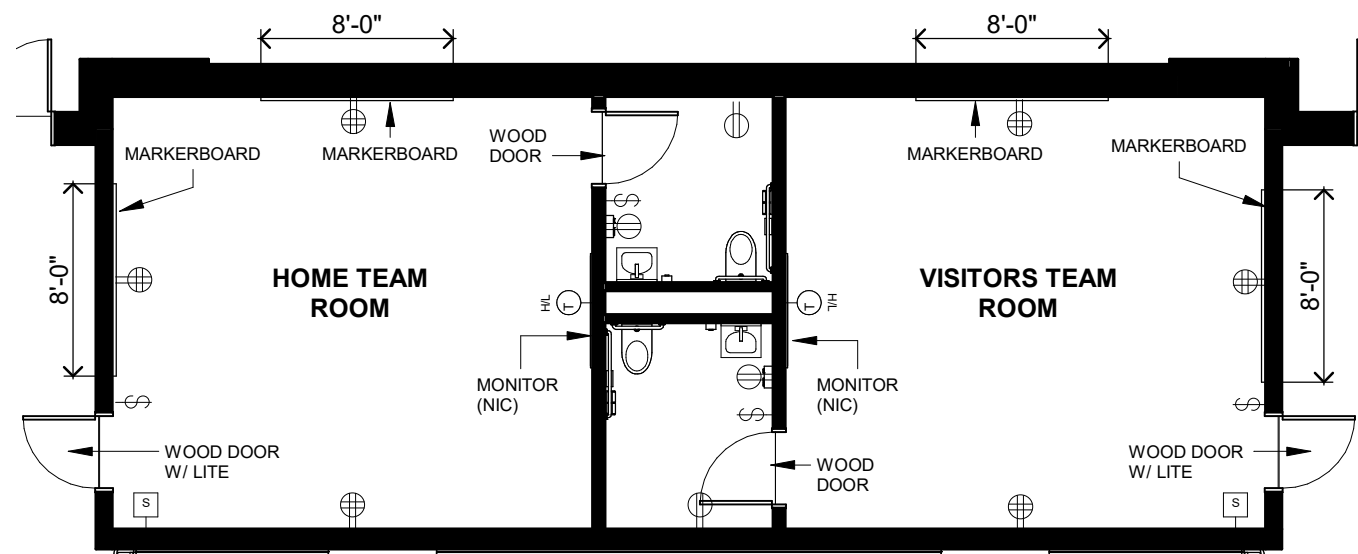


1 GYMNASIUM ADDITION PLAN
3/64" = 1'-0"
0 16' 32'



NOTES:
FINISHES:
FLOORING- LVT
TOILET FLOORING- TILE
WALLS- CMU AND PAINT
CEILING- ACT
LIGHTING- LED

1 TEAMS ROOMS AXON



2 TEAMS ROOMS
1/8" = 1'-0"
0 6' 12'

ELECTRICAL SYMBOL KEY

- ☎ PHONE
- ⊕ DUPLEX RECEPTACLE
- ⊕⊕ DOUBLE DUPLEX RECEPTACLE
- ☐ ▽ SURFACE MOUNT DEVICES
- ⚡ SINGLE LIGHT SWITCH
- ☐ ☐ WALL OR CEILING PROJECTOR
- ☐ TV OUTLET (HIGH AND/OR LOW)
- ⚡ DATA OUTLET
- ☐ FLOOR BOX (POWER AND DATA)
- ☐ CAMERA
- ☐ HUDL CAMERA
- ☐ WAP WIRELESS ACCESS POINT
- ☐ NETWORK BOX
- ☐ VAPE SENSOR



Main Entry Drive



Main Entry & Plaza



Seneca High School Gymnasium Addition
Seneca High School



South Exterior View



North Exterior View



East Exterior View



South Exterior Plaza



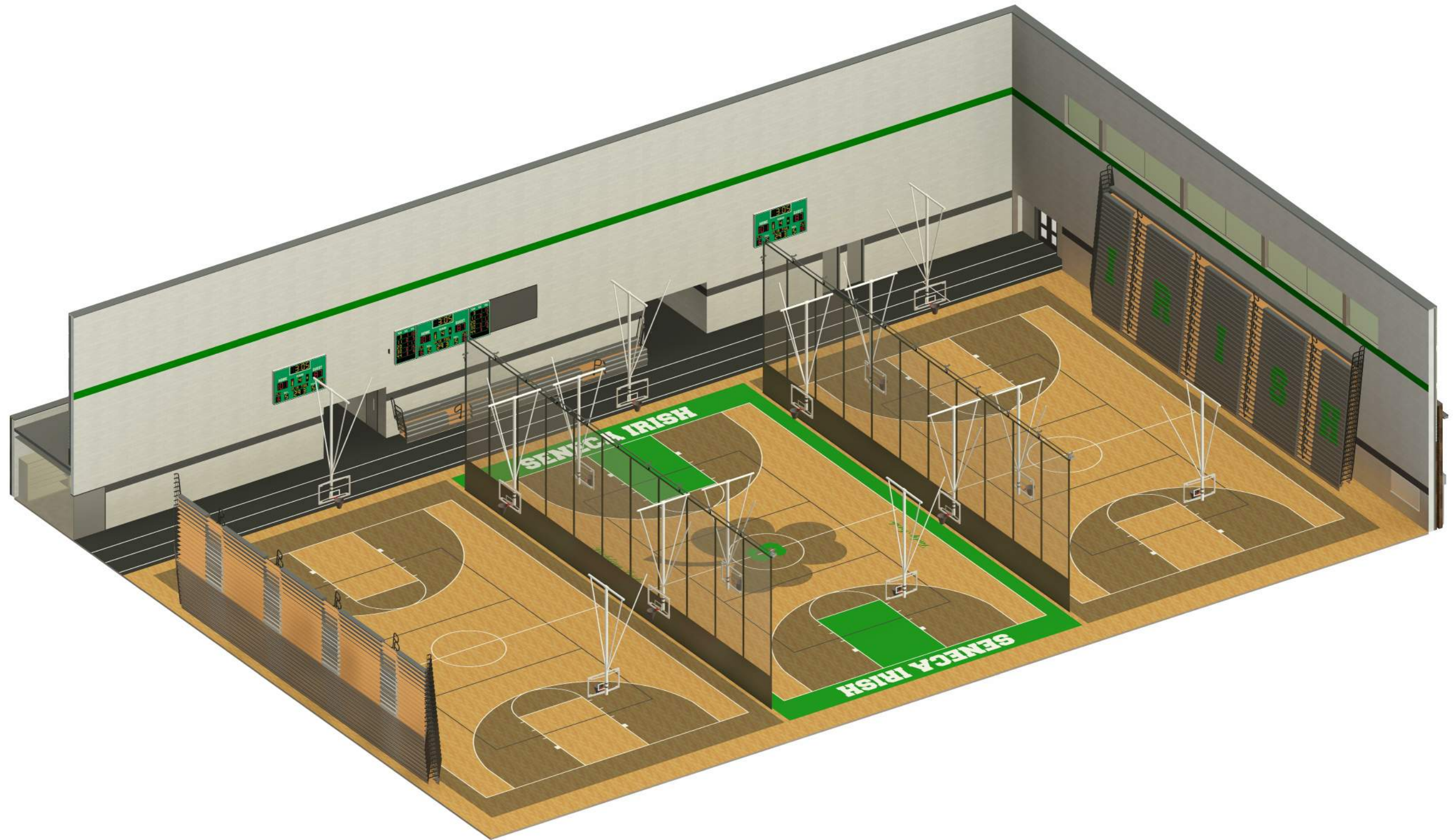
Main Entry Approach



Event Entrance



Events Lobby & Donor Wall





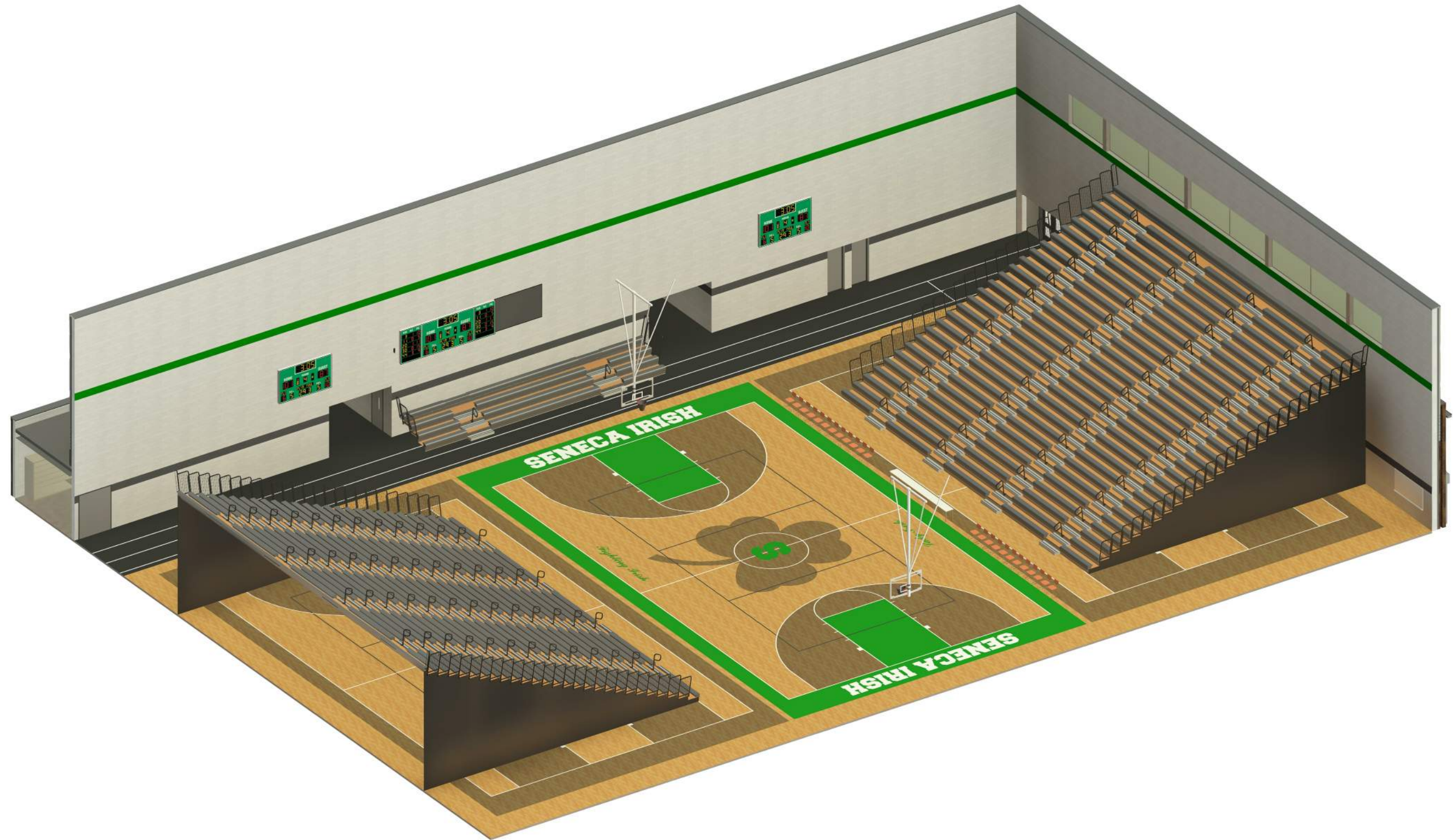
BBall Court Entry



Seneca High School Gymnasium Addition

Seneca High School
July 8, 2022







Comp Court Entry



Competition Court Bleacher