

Design Development Submittal

Seneca High School



**Seneca High School
Gymnasium Addition
223002**

Seneca, IL
July 8, 2022





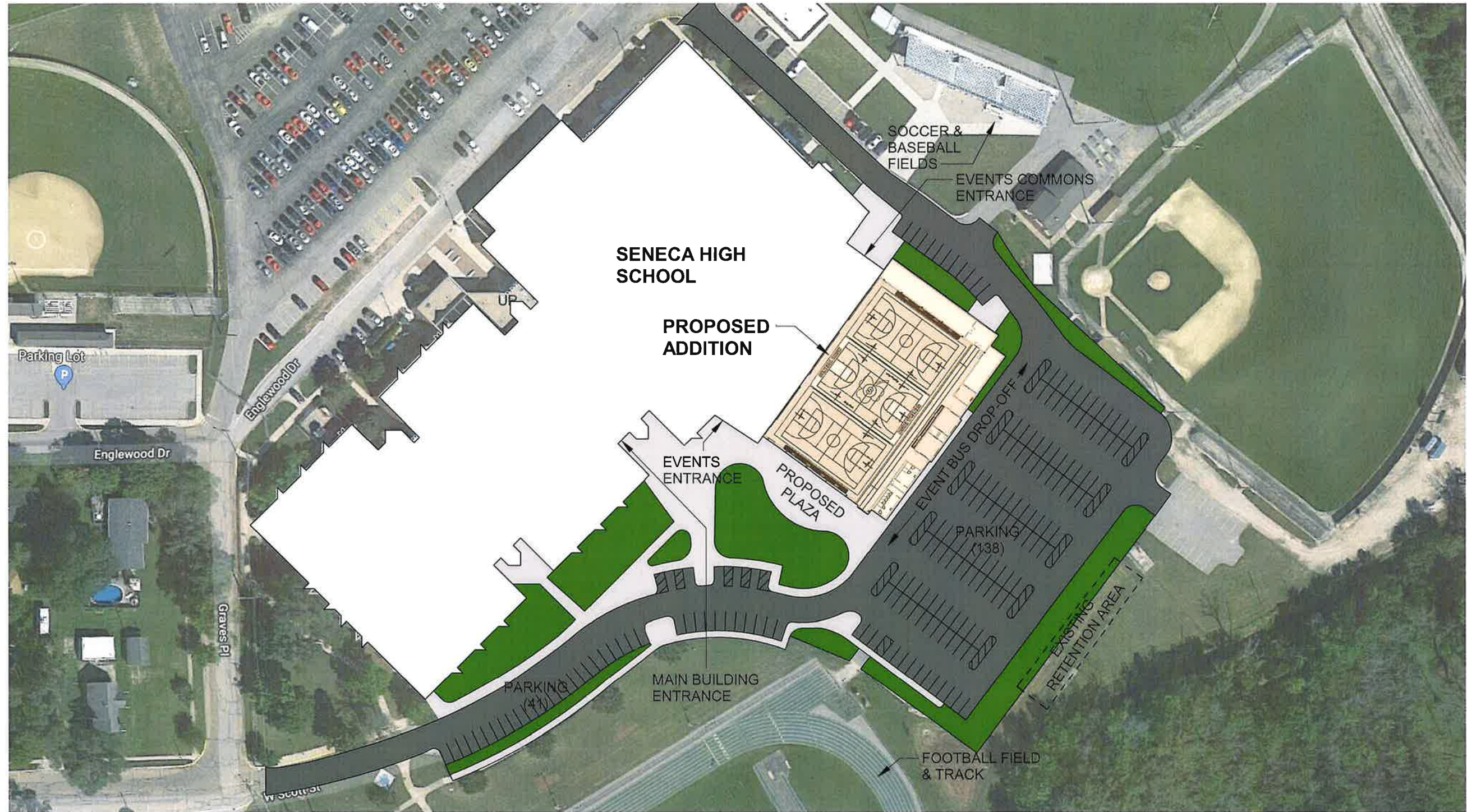
TABLE OF CONTENTS

Plans & Sections

Page 2	Site & Parking Plan
Page 3	Schematic Plan
Page 4	Gymnasium
Page 5	Mat & Large Equipment Storage
Page 6	PE Storage
Page 7	Teams Rooms
Page 8	Officials & Coaches Rooms
Page 9	Toilet Rooms
Page 10	Concessions
Page 11	Existing Mezzanine Remodel
Page 12	Gymnasium Building Section - Basketball Court
Page 13	Gymnasium Building Section - Volleyball Court

Renders & Axons

Page 14	Main Entry Drive
Page 15	Main Entry & Plaza
Page 16	South Exterior View
Page 17	North Exterior View
Page 18	East Exterior View
Page 19	South Exterior Plaza
Page 20	Main Entry Approach
Page 21	Event Entrance
Page 22	Events Lobby & Donor Wall
Page 23	Axon - BBall Court
Page 24	BBall Court Entry
Page 25	Basketball Court Bleacher
Page 26	Axon - Comp Court Layout
Page 27	Comp Court Entry
Page 28	Competition Court Bleacher



1 SITE PLAN
1" = 100'-0"
0 75' 150'



BLEACHER COUNT:

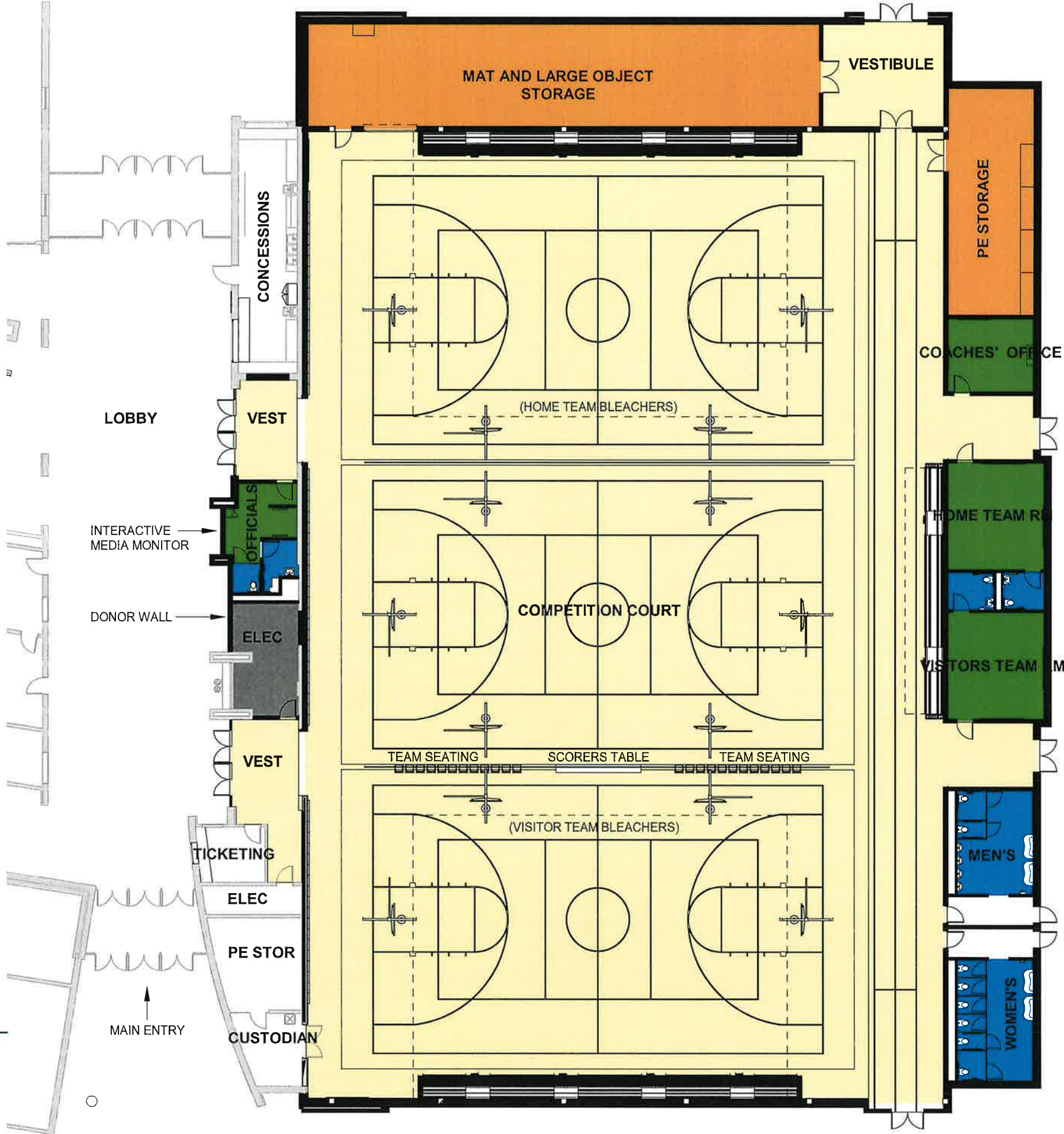
MAIN BLEACHERS: 936 SEATS (EACH)

BAND BLEACHERS: 98 SEATS

TOTAL SEATING: 1,970 SEATS

FUNCTION LEGEND

- ACTIVITY & CIRCULATION
- SUPPORT SPACES
- TOILETS
- MECH/ELEC
- STORAGE



1 GYMNASIUM ADDITION PLAN
 3/64" = 1'-0"
 0 16' 32'

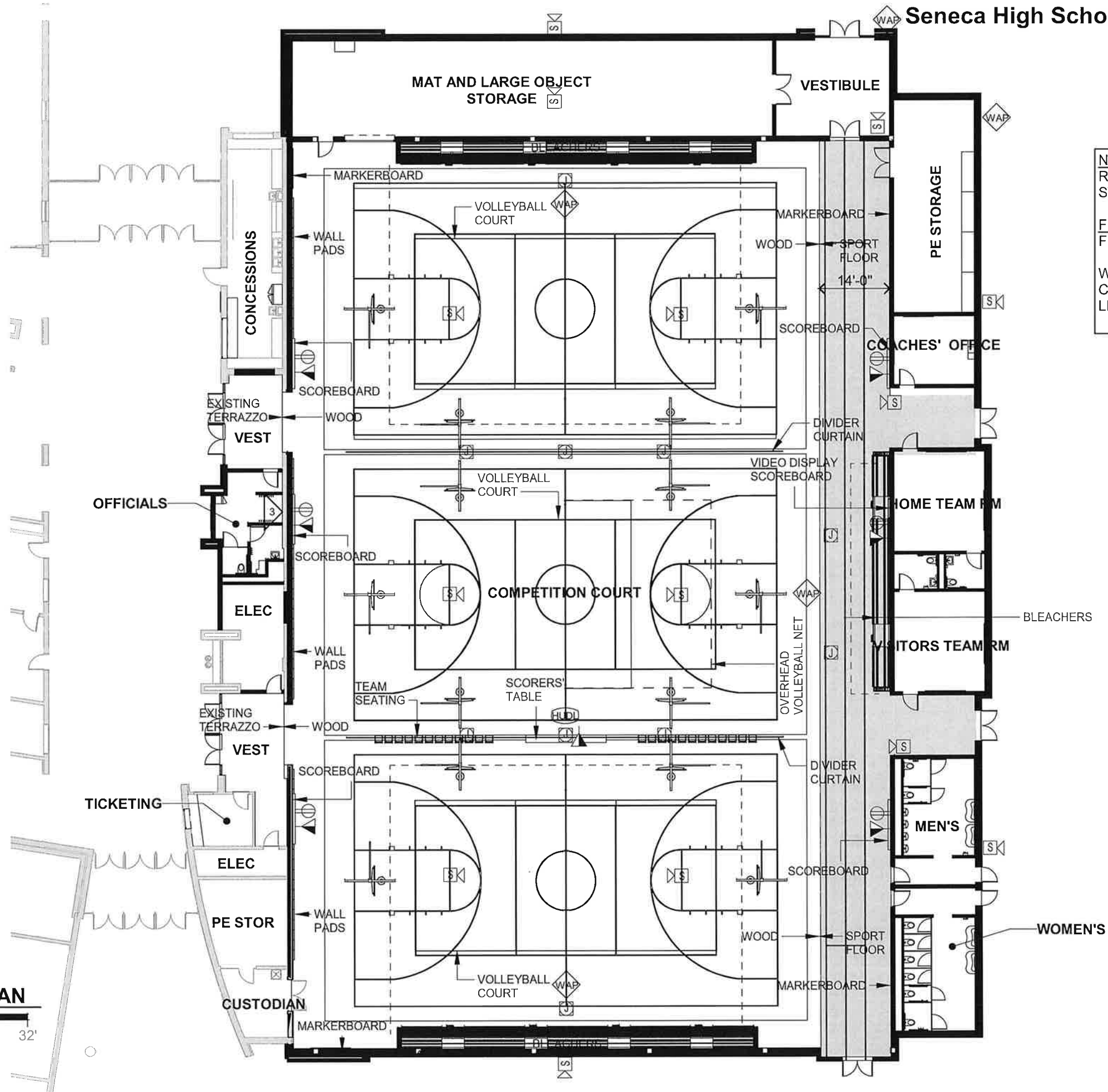


NOTES:
REINSTALL MAT LIFTS IN LARGE STORAGE ROOM

FINISHES:
FLOORING- WOOD (COURT), RUBBER ATHLETIC FLOOR (TRACK)
WALLS- CMU AND PAINT
CEILING- EXPOSED
LIGHTING- LED

ELECTRICAL SYMBOL KEY

- PHONE
- DUPLEX RECEPTACLE
- DOUBLE DUPLEX RECEPTACLE
- SURFACE MOUNT DEVICES
- SINGLE LIGHT SWITCH
- WALL OR CEILING PROJECTOR
- TV OUTLET (HIGH AND/OR LOW)
- DATA OUTLET
- FLOOR BOX (POWER AND DATA)
- CAMERA
- HUDL CAMERA
- WIRELESS ACCESS POINT
- NETWORK BOX
- VAPE SENSOR



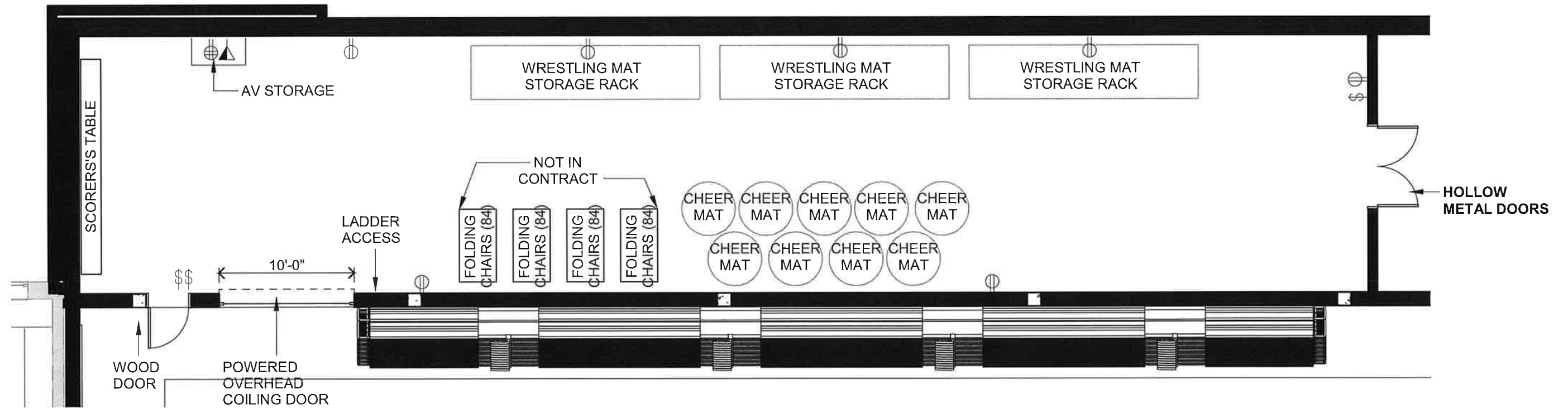
1 GYMNASIUM ADDITION PLAN
3/64" = 1'-0"
0 16' 32'



ELECTRICAL SYMBOL KEY

- PHONE
- DUPLEX RECEPTACLE
- DOUBLE DUPLEX RECEPTACLE
- SURFACE MOUNT DEVICES
- SINGLE LIGHT SWITCH
- WALL OR CEILING PROJECTOR
- TV OUTLET (HIGH AND/OR LOW)
- DATA OUTLET
- FLOOR BOX (POWER AND DATA)
- CAMERA
- HUDL CAMERA
- WIRELESS ACCESS POINT
- NETWORK BOX
- VAPE SENSOR

NOTES:
FINISHES:
FLOORING- POLISHED CONCRETE
WALLS- CMU AND PAINT
CEILING- PAINTED STEEL DECK
LIGHTING- SURFACE MOUNTED






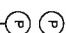
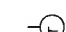

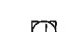
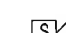

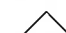




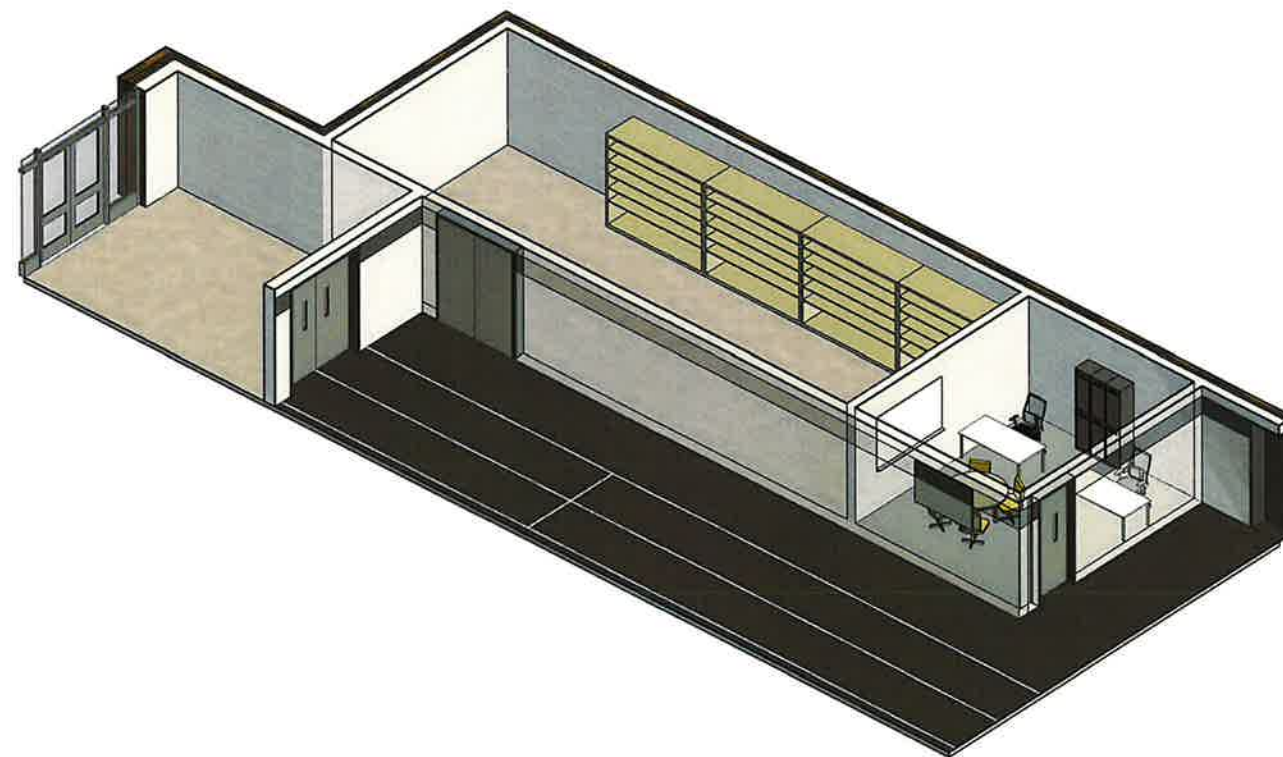
MAT AND LARGE EQUIPMENT STORAGE



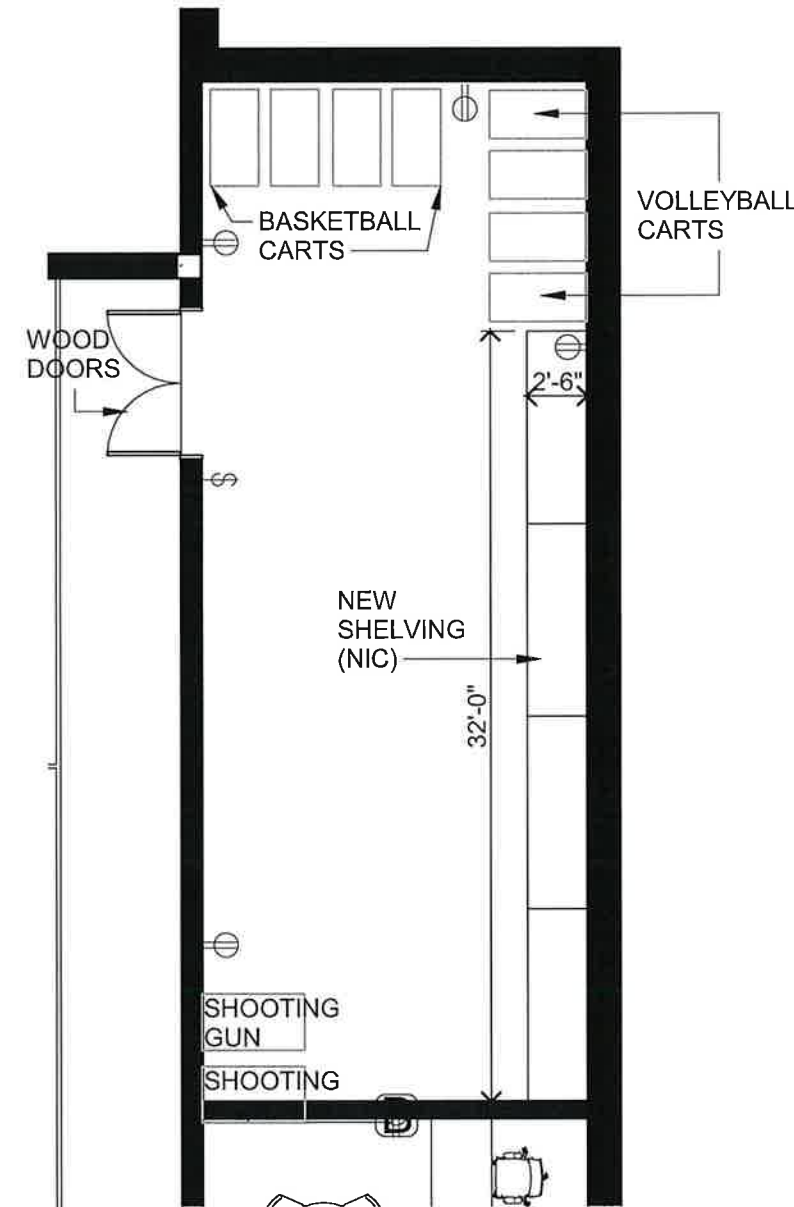
NOTES:
FINISHES:
FLOORING- POLISHED CONCRETE
WALLS- CMU AND PAINT
CEILING- PAINTED STEEL DECK
LIGHTING- SURFACE MOUNTED

ELECTRICAL SYMBOL KEY

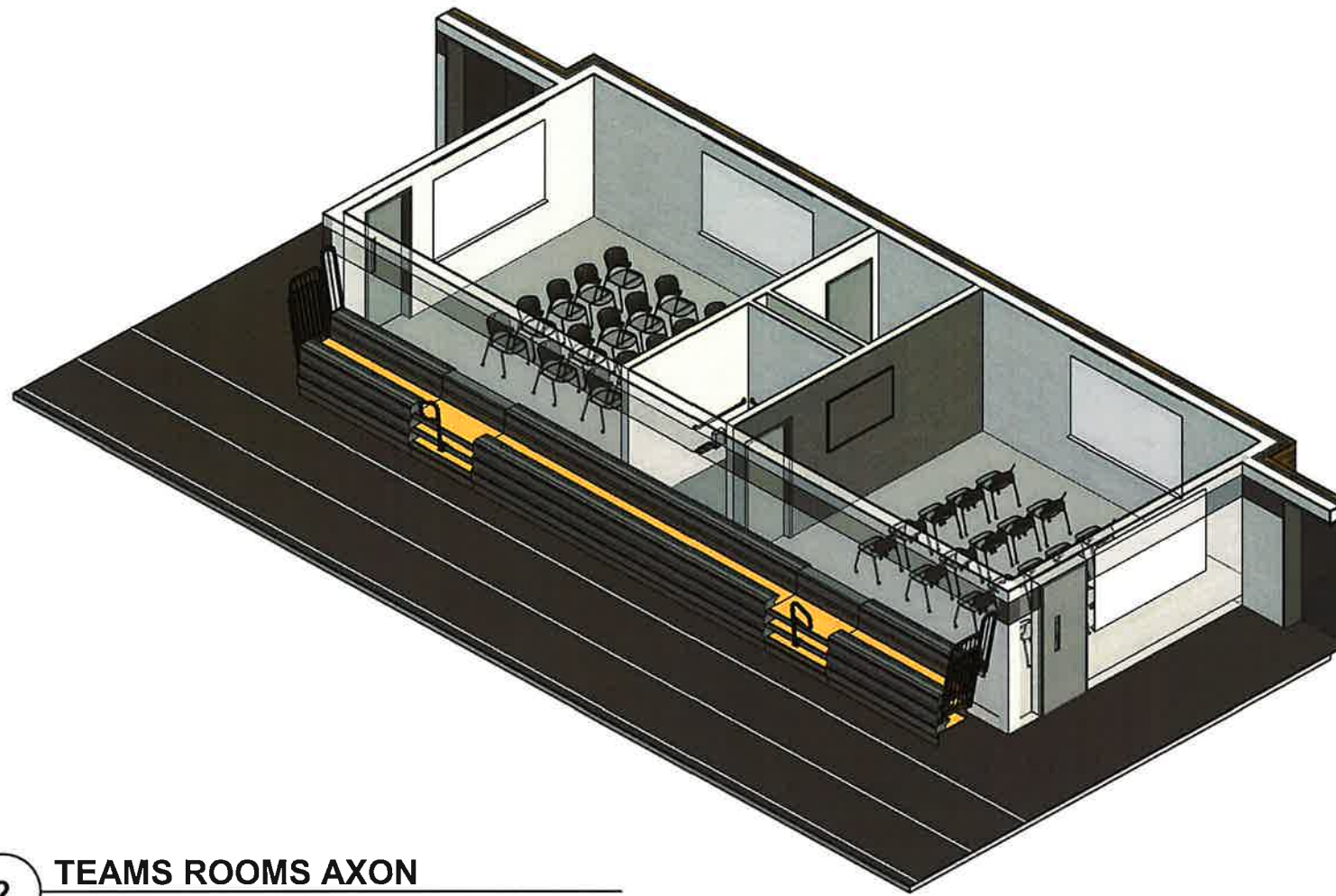
-  PHONE
-  DUPLEX RECEPTACLE
-  DOUBLE DUPLEX RECEPTACLE
-  SURFACE MOUNT DEVICES
-  SINGLE LIGHT SWITCH
-  WALL OR CEILING PROJECTOR
-  TV OUTLET (HIGH AND/OR LOW)
-  DATA OUTLET
-  FLOOR BOX (POWER AND DATA)
-  CAMERA
-  HUDL CAMERA
-  WIRELESS ACCESS POINT
-  NETWORK BOX
-  VAPE SENSOR



2 STORAGE AXON

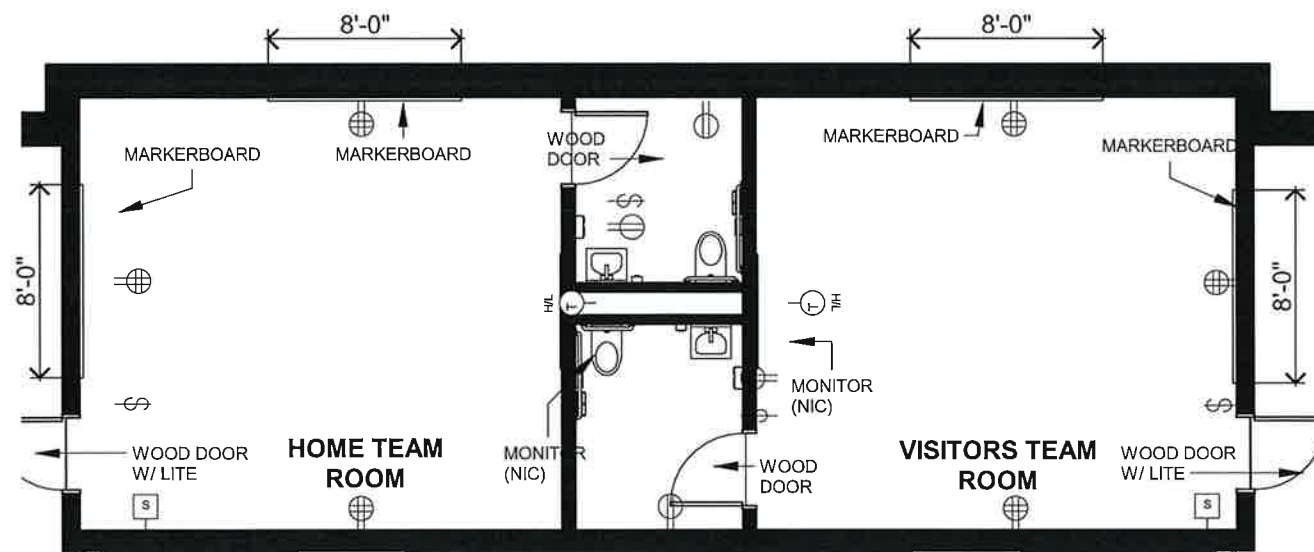


1 PE STORAGE
1/8" = 1'-0"
0 6' 12'



2 TEAMS ROOMS AXON

NOTES:
FINISHES:
FLOORING- LVT
TOILET FLOORING- TILE
WALLS- CMU AND PAINT
CEILING- ACT
LIGHTING- LED

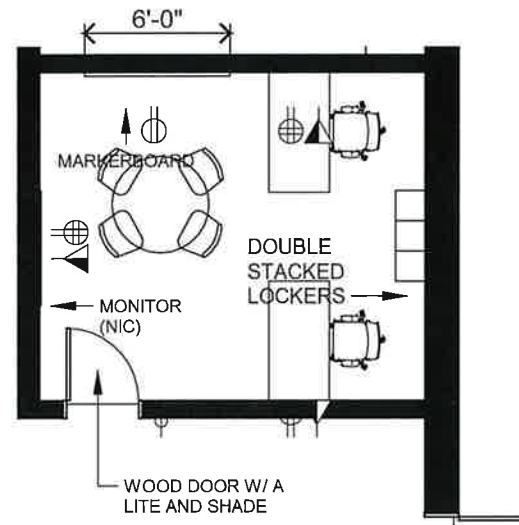


1 TEAMS ROOMS
1/8" = 1'-0"
0 6' 12'

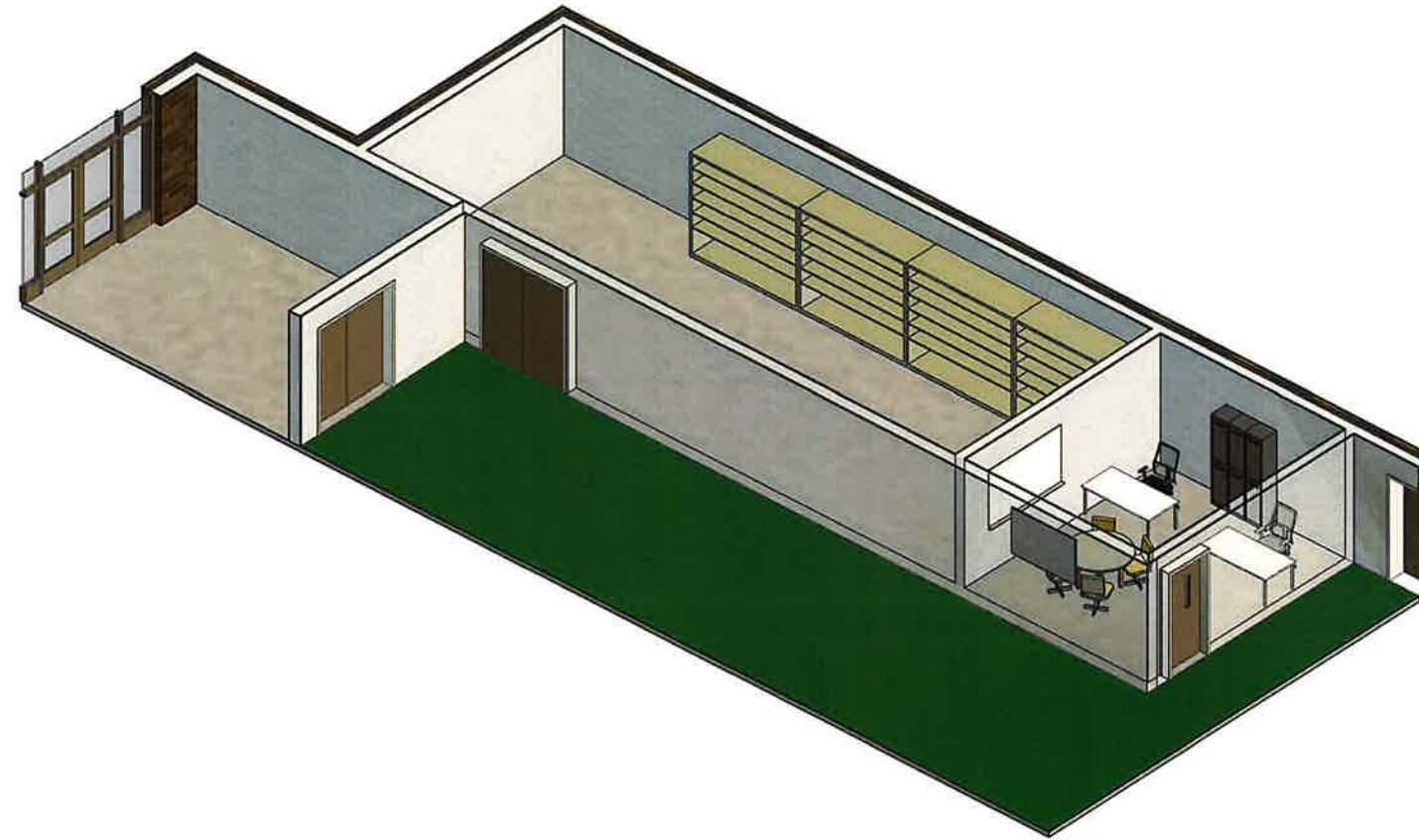
ELECTRICAL SYMBOL KEY

- ☎ PHONE
- ⊕ DUPLEX RECEPTACLE
- ⊕⊕ DOUBLE DUPLEX RECEPTACLE
- ☎⎓ SURFACE MOUNT DEVICES
- ⚡ SINGLE LIGHT SWITCH
- ⊕⊕ WALL OR CEILING PROJECTOR
- ⊕⎓ TV OUTLET (HIGH AND/OR LOW)
- ⚡ DATA OUTLET
- ☎ FLOOR BOX (POWER AND DATA)
- ☎ CAMERA
- ☎ HUDL CAMERA
- ☎ WAP WIRELESS ACCESS POINT
- ☎ NETWORK BOX
- ☎ VAPE SENSOR

NOTES:
FINISHES:
OFFICIALS FLOORING- LVT/TILE
COACHES' FLOORING- LVT
WALLS- CMU AND PAINT
CEILING- ACT
LIGHTING- LED

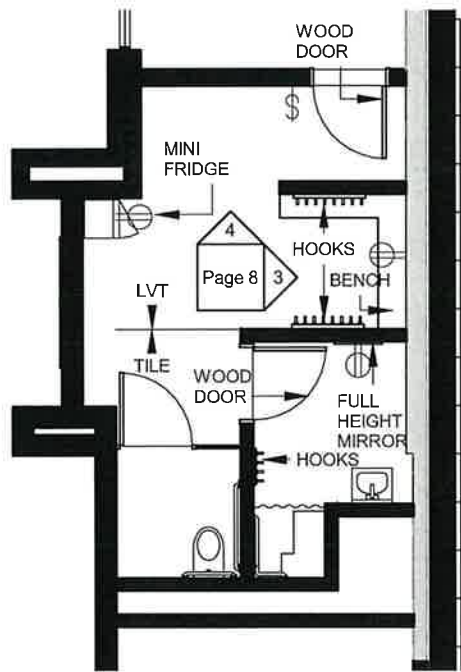


2 COACHES' ROOM
1/8" = 1'-0"
0 6' 12'

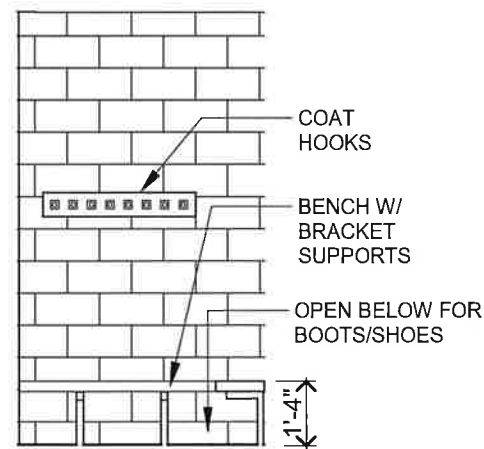


ELECTRICAL SYMBOL KEY

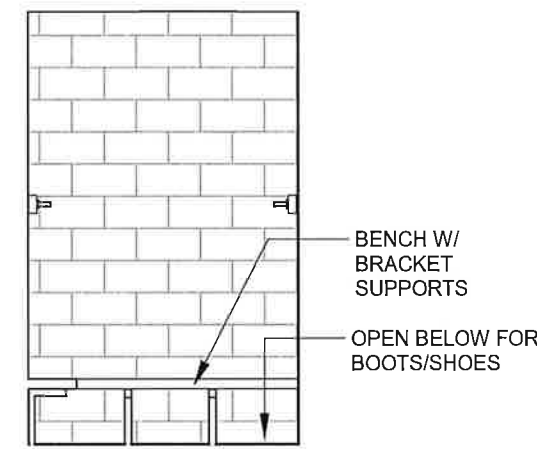
- ☎ PHONE
- ⊕ DUPLEX RECEPTACLE
- ⊕⊕ DOUBLE DUPLEX RECEPTACLE
- ⊕▽ SURFACE MOUNT DEVICES
- ⚡ SINGLE LIGHT SWITCH
- ⊕⊕ WALL OR CEILING PROJECTOR
- ⊕⊕ TV OUTLET (HIGH AND/OR LOW)
- ⚡ DATA OUTLET
- ⊕⊕ FLOOR BOX (POWER AND DATA)
- 📷 CAMERA
- 📹 HUDL CAMERA
- 📶 WAP WIRELESS ACCESS POINT
- 📡 NETWORK BOX
- 📡 VAPE SENSOR



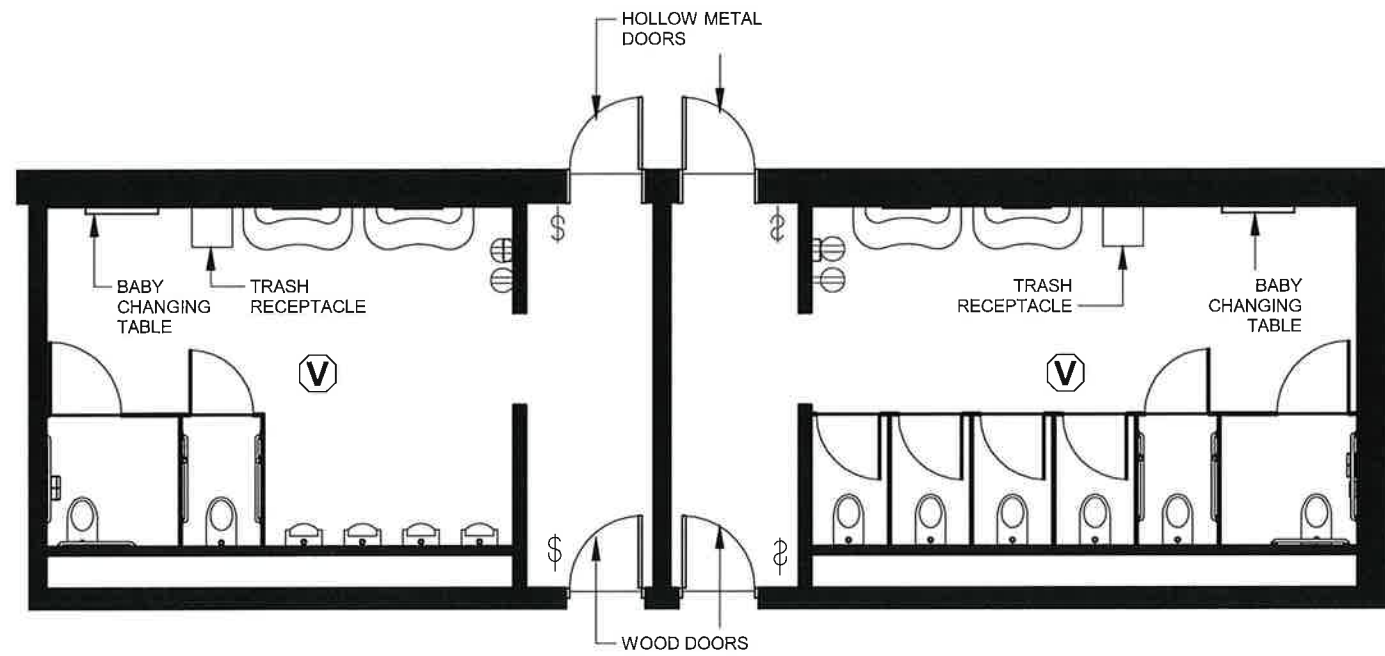
1 OFFICIALS ROOM
1/8" = 1'-0"
0 6' 12'



4 OFFICIALS ROOM ELEVATION 1
1/4" = 1'-0"
0 3' 6'



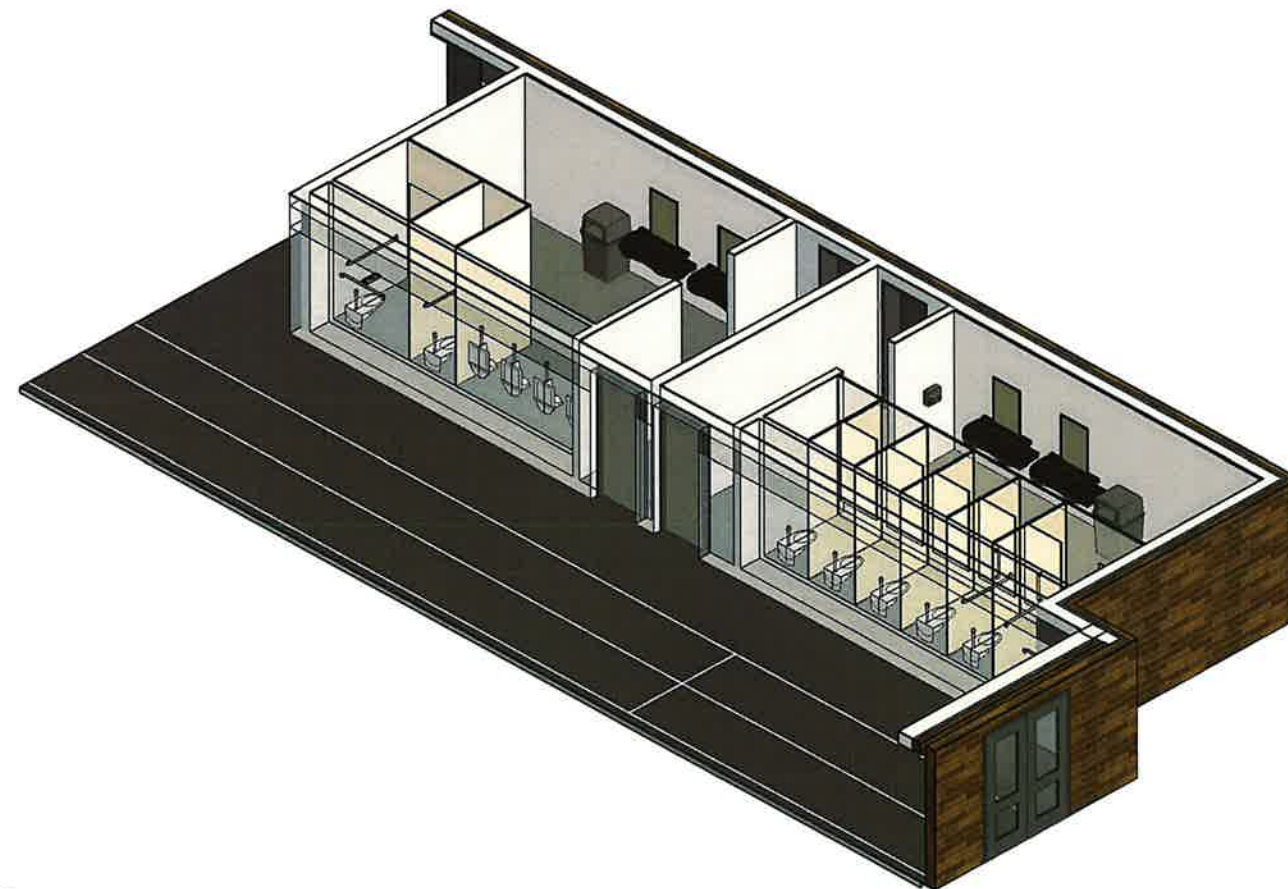
3 OFFICIALS ROOM ELEVATION 2
1/4" = 1'-0"
0 3' 6'



NOTES:
PORCELAIN FIXTURES
HARDWIRED FIXTURES

FINISHES:
FLOORING- TILE
WALLS- PAINT/TILE
CEILING- VINYL ACT
LIGHTING- RECESSED

1 TOILET ROOMS
1/8" = 1'-0"
0 6' 12'



2 TOILET ROOM AXON

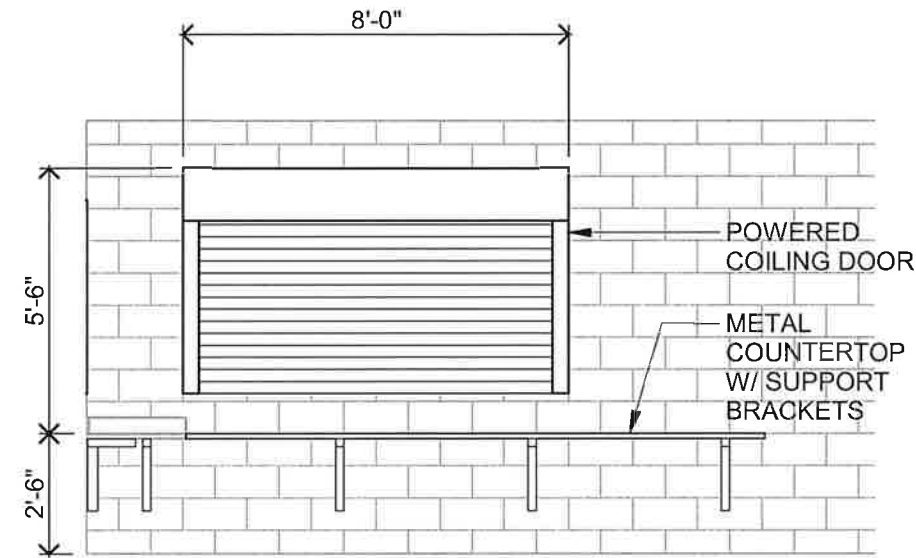
ELECTRICAL SYMBOL KEY

- ☎ PHONE
- ⊕ DUPLEX RECEPTACLE
- ⊕⊕ DOUBLE DUPLEX RECEPTACLE
- ⊕▽ SURFACE MOUNT DEVICES
- ⚡ SINGLE LIGHT SWITCH
- ⊕⊙ WALL OR CEILING PROJECTOR
- ⊕⊙≠ TV OUTLET (HIGH AND/OR LOW)
- ◀ DATA OUTLET
- ⊕ FLOOR BOX (POWER AND DATA)
- 📷 CAMERA
- 📹 HUDL CAMERA
- 📶 WAP WIRELESS ACCESS POINT
- 📦 NETWORK BOX
- Ⓜ VAPE SENSOR

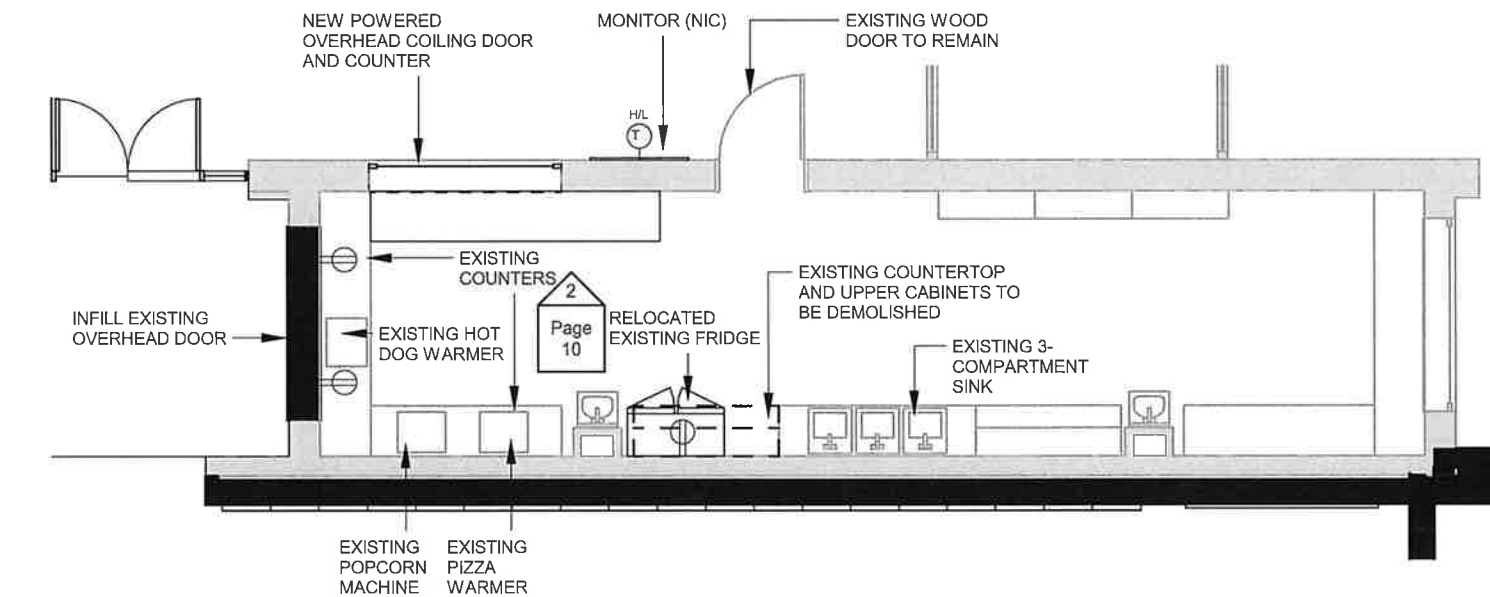
ELECTRICAL SYMBOL KEY

- PHONE
- DUPLEX RECEPTACLE
- DOUBLE DUPLEX RECEPTACLE
- SURFACE MOUNT DEVICES
- SINGLE LIGHT SWITCH
- WALL OR CEILING PROJECTOR
- TV OUTLET (HIGH AND/OR LOW)
- DATA OUTLET
- FLOOR BOX (POWER AND DATA)
- CAMERA
- HUDL CAMERA
- WIRELESS ACCESS POINT
- NETWORK BOX
- VAPE SENSOR

NOTES:
FINISHES:
FLOORING- EXISTING EPOXY
WALLS- EXIST CMU & PAINT
CEILING- ACT
LIGHTING- EXISTING RECESSED



2 OVERHEAD DOOR AT COUNTERTOP
1/4" = 1'-0"
0 3' 6'



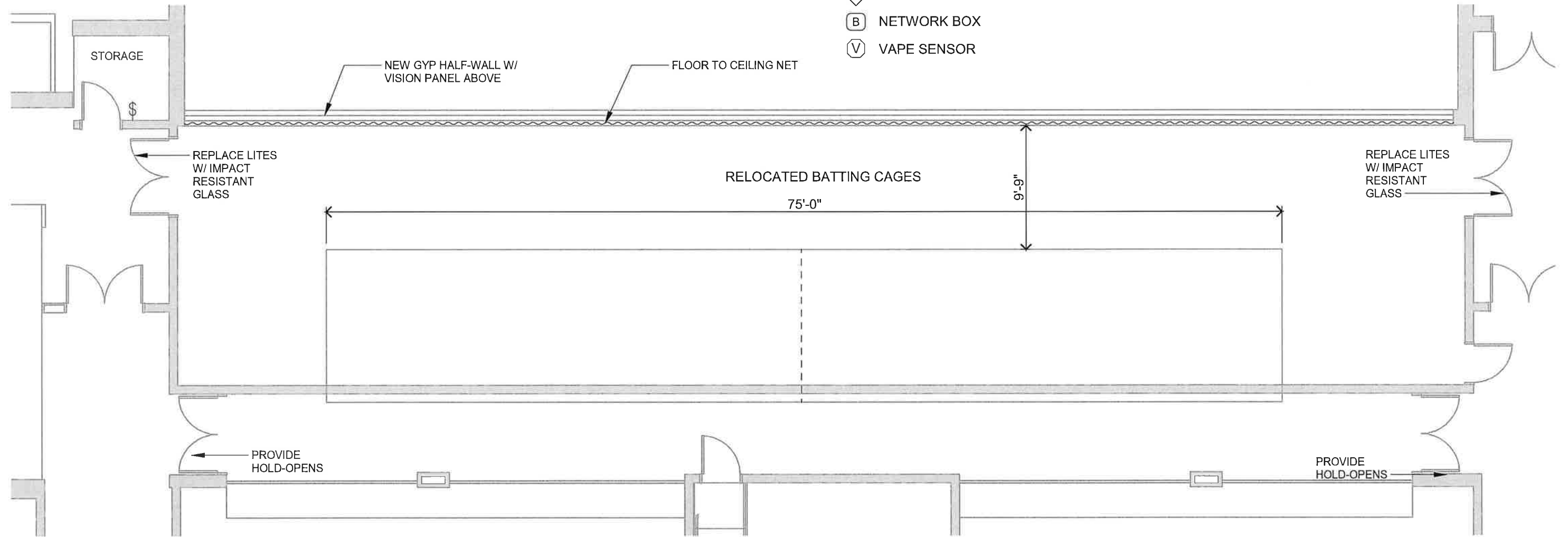
1 CONCESSIONS
1/8" = 1'-0"
0 6' 12'



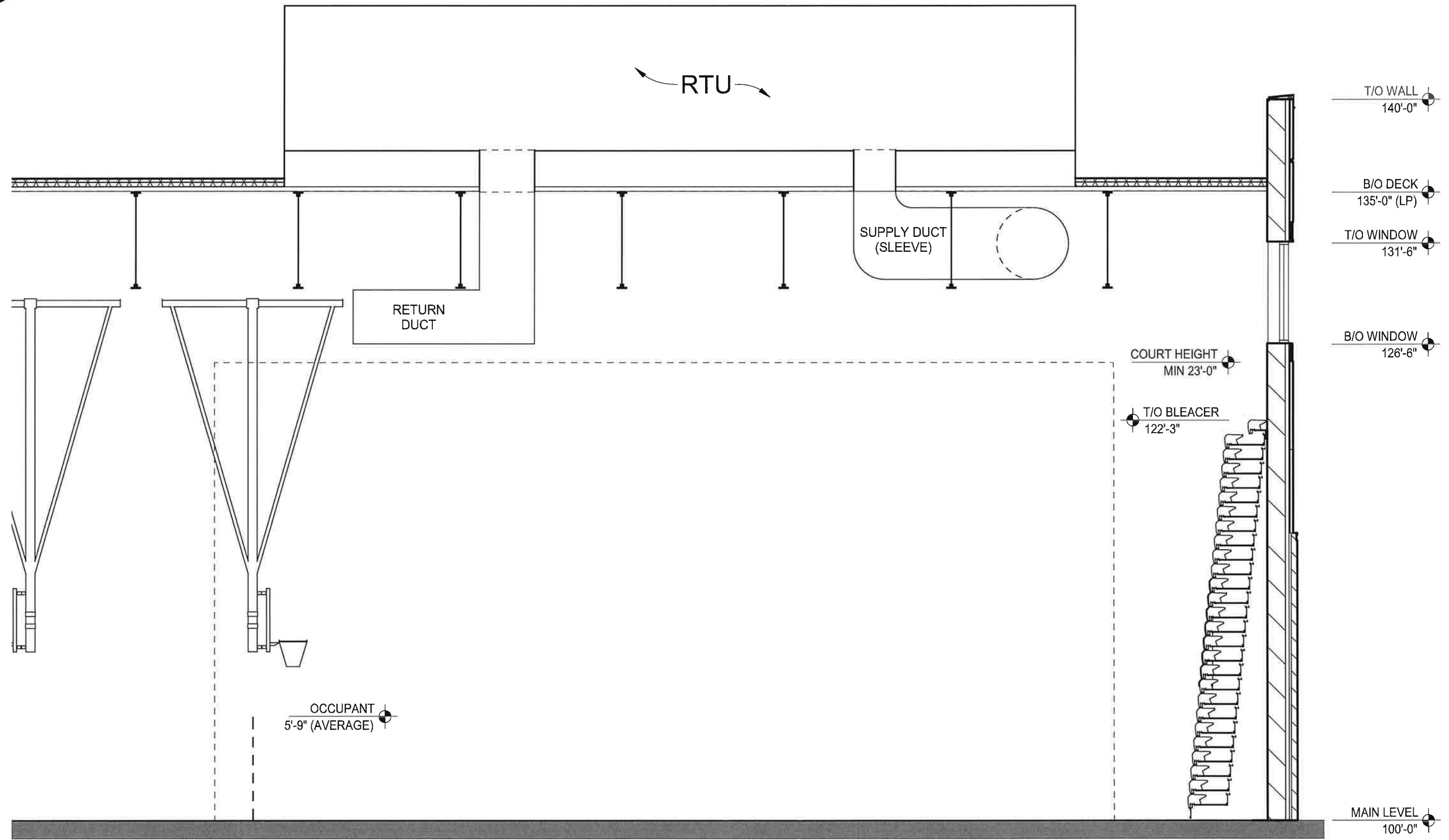
ELECTRICAL SYMBOL KEY

- PHONE
- DUPLEX RECEPTACLE
- DOUBLE DUPLEX RECEPTACLE
- SURFACE MOUNT DEVICES
- SINGLE LIGHT SWITCH
- WALL OR CEILING PROJECTOR
- TV OUTLET (HIGH AND/OR LOW)
- DATA OUTLET
- FLOOR BOX (POWER AND DATA)
- CAMERA
- HUDL CAMERA
- WIRELESS ACCESS POINT
- NETWORK BOX
- VAPE SENSOR

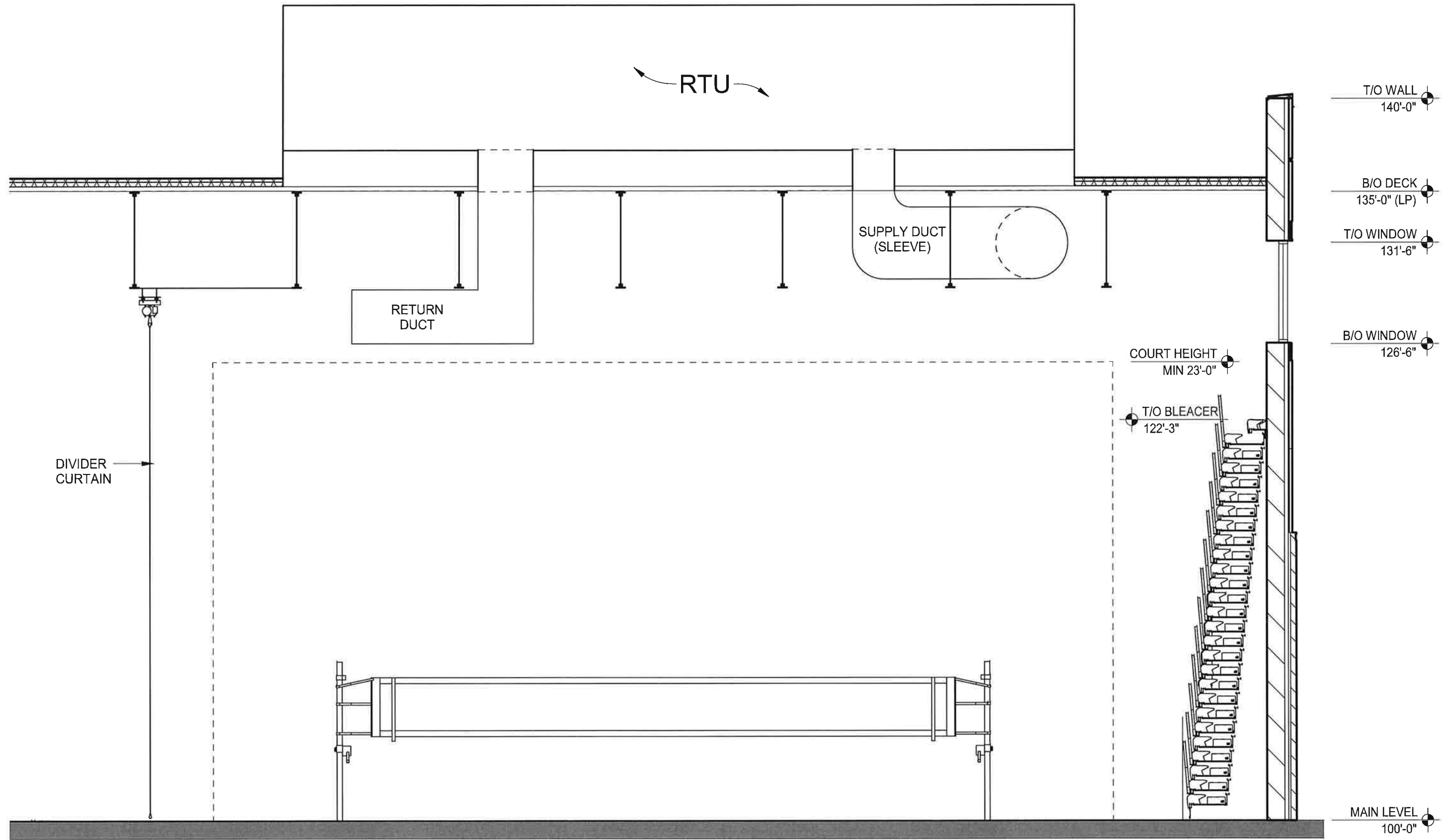
NOTES:
FINISHES:
FLOORING- TURF
WALLS- EXISTING CMU,
NEW GYP BD HALF WALL
CEILING- EXISTING
LIGHTING- EXISTING



1 GYM MEZZANINE
1/8" = 1'-0"
0 6' 12'



1 BUILDING SECTION - BASKETBALL COURT
3/16" = 1'-0"
0 4' 8'



1 BUILDING SECTION - VOLLEYBALL COURT
3/16" = 1'-0"
0 4' 8'



















